



# Keeping our citizens and professional teams safe

Rachel Jones – National Sales Manager  
January 2021

# Simple, smart home monitoring



Designed and manufactured  
in the UK



# Canary Care system





**Day-to-day  
activity  
monitoring**



**No wires  
No Wi-Fi  
No cameras  
No microphones  
Just peace of mind**



## The emergence of 'Contactless Care'??

### Challenging times – NHS & Local Authorities, Dom Care and Housing

- Existing issues are still there – Resources, budgets, morale, overstretched services
- There is an urgency about how we continue with existing services while take on additional vulnerable/Covid patients
- We don't have time for months of complex planning or tenders
- HCP/Careworkers that are vulnerable as well as H&S considerations
- We need to free up capacity faster than ever
- Huge numbers of staff are falling/burning out
- Even bigger impact if “support bubbles” are taken away
- No magic bullet



## How Canary Care can help

### Opportunities to:

- Minimise unnecessary visits/reroute care to those that need urgent visits
- Discharge more patients from hospital into the community, faster
- Avoid hospital admissions (thus reducing risk)
- A way to maintain social distancing
- A way to protect vulnerable/shielding clients & staff
- Provide a way of monitoring those who may not be managing well/reassurance
  
- Introduction of the concept of virtualised care
- Continue to promote independent living (at home)
- Involve families and their loved ones who want to help
- Take advantage of 24 hr monitoring services (making use of existing ARC platforms)





**Movement**



**Temperature**



**Door activity**



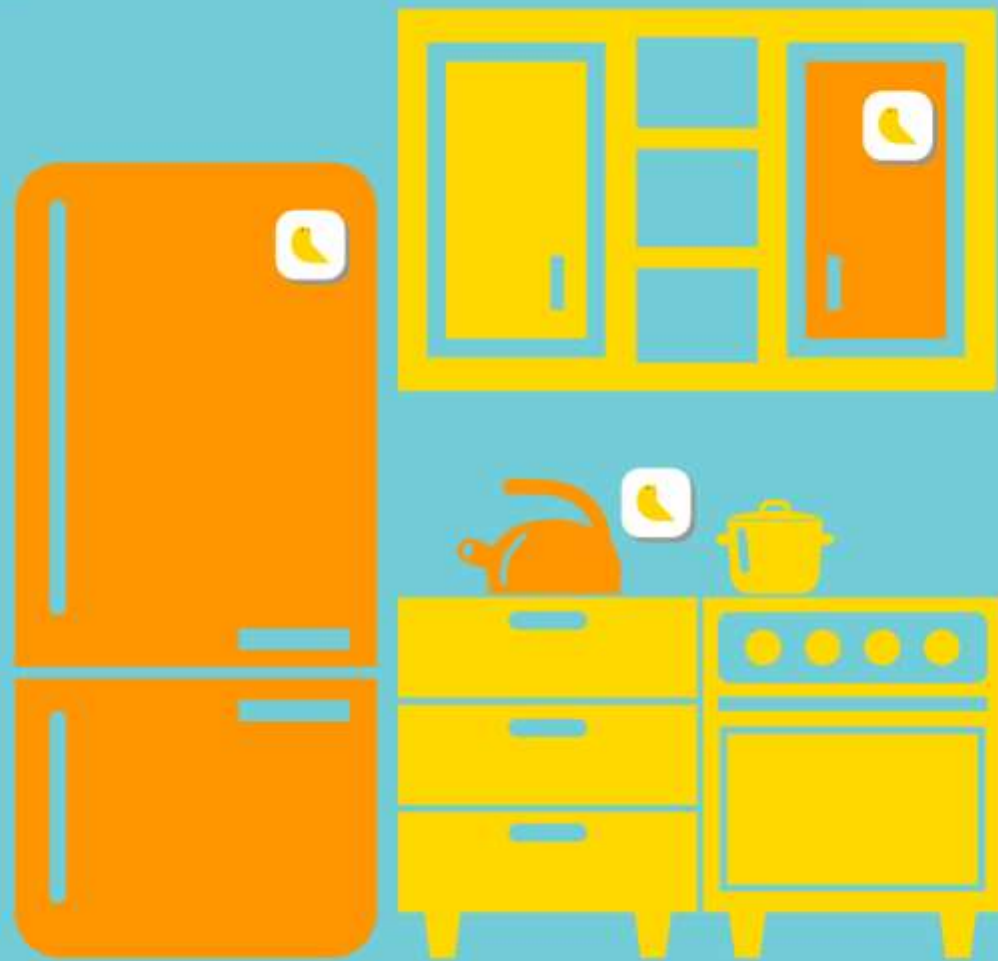
**Visitors**



**Instant alerts**

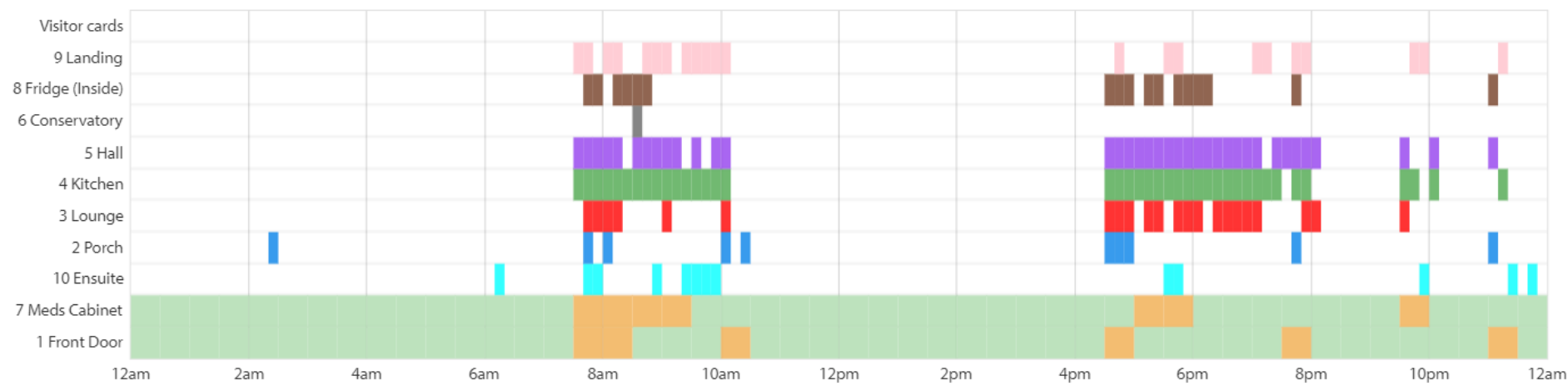




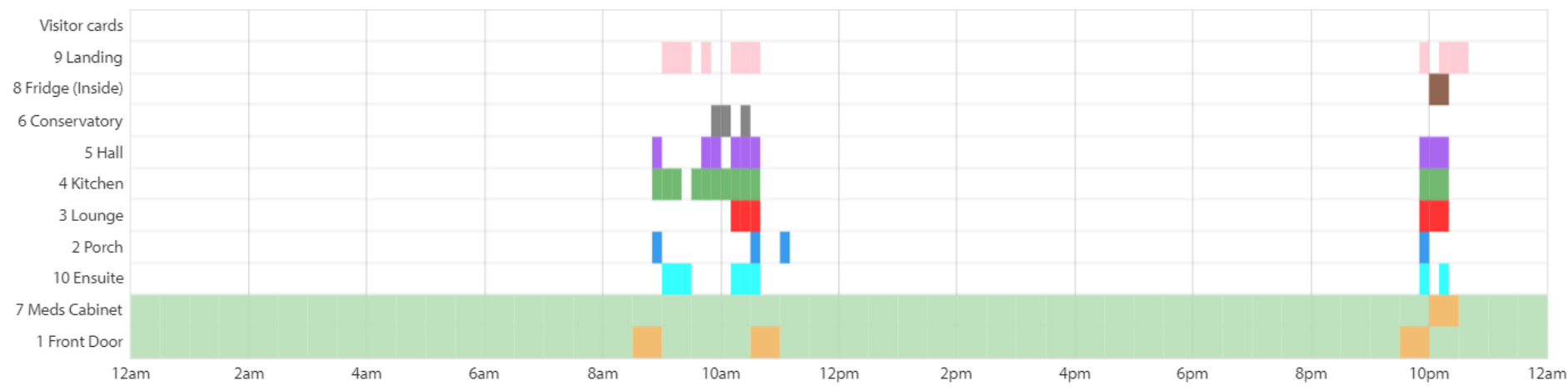


# Spot behavioural changes using the daily overview charts...

13/02/2018



12/02/2018



# ... or the cumulative movements chart

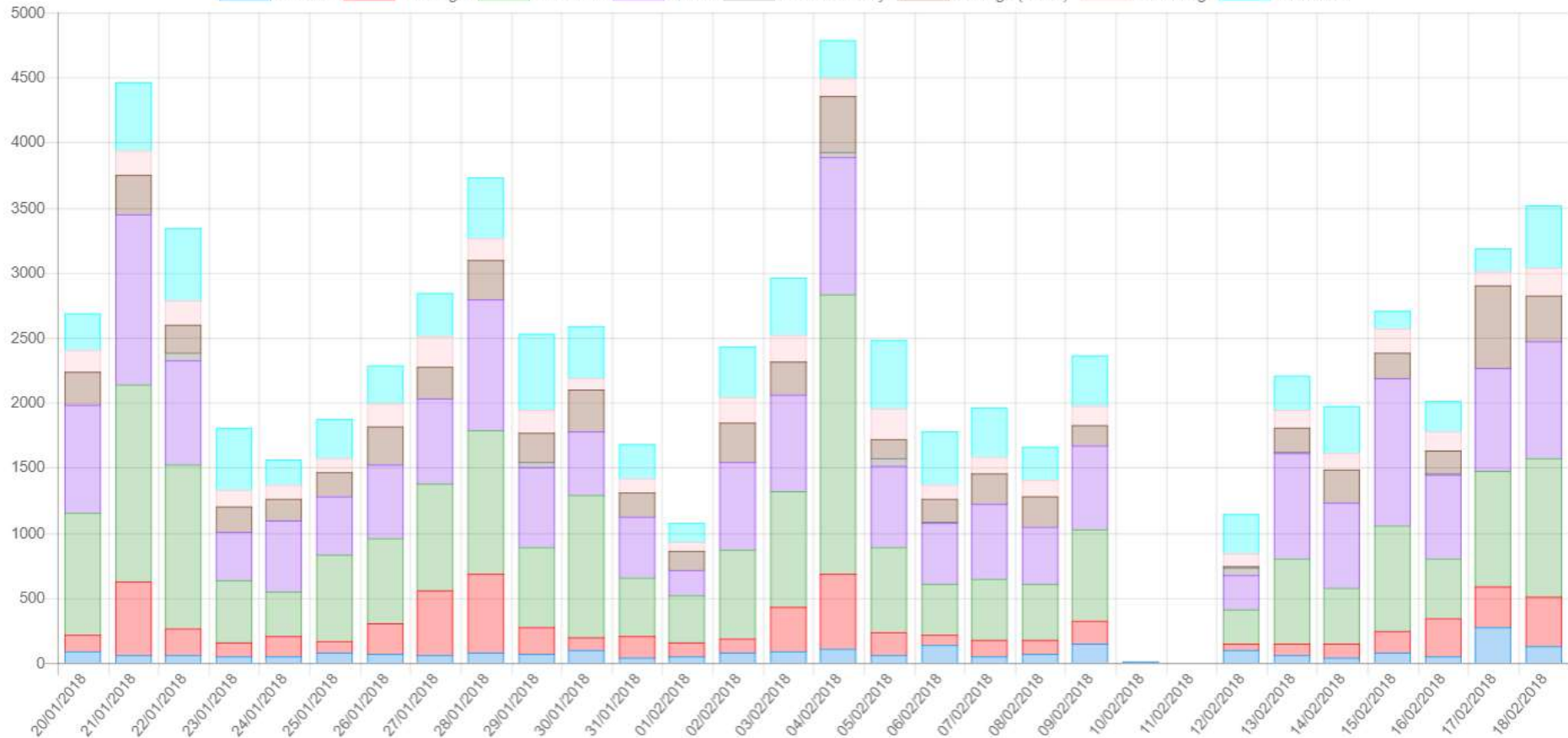
## Cumulative movements

Show per: Day

20 January 2018 - 18 February 2018

Click a sensor name below to show/hide it from the chart:

2 Porch 3 Lounge 4 Kitchen 5 Hall 6 Conservatory 8 Fridge (Inside) 9 Landing 10 Ensuite



## Final stages of testing....

- Working on supporting our NHS teams with vital sign information
- Especially relevant during the Covid-19 pandemic –assisting with diagnosis, early detection of deterioration and post discharge care
- Forms part of the NEWS2 requirements which were introduced by the NHS in November 2020





# Why Canary Care?



Proven. We have been delivering a reliable service to paying customers for over six years.



Flexible. Our solution addresses multiple channels and supports many short and long-term use cases.

Simple. Designed for consumers. Easy self-installation, intuitive apps.

Unique. Our multi-function sensor was specifically designed for care applications.

Control. We own all the IP for our end-to-end service. We design and manufacture our own hardware giving us more supply chain security.



Keeping citizens and  
professional teams safe  
during challenging times