



mobius
NETWORKS
.co.uk

PUTTING THE SIM AT THE HEART OF HEALTHCARE

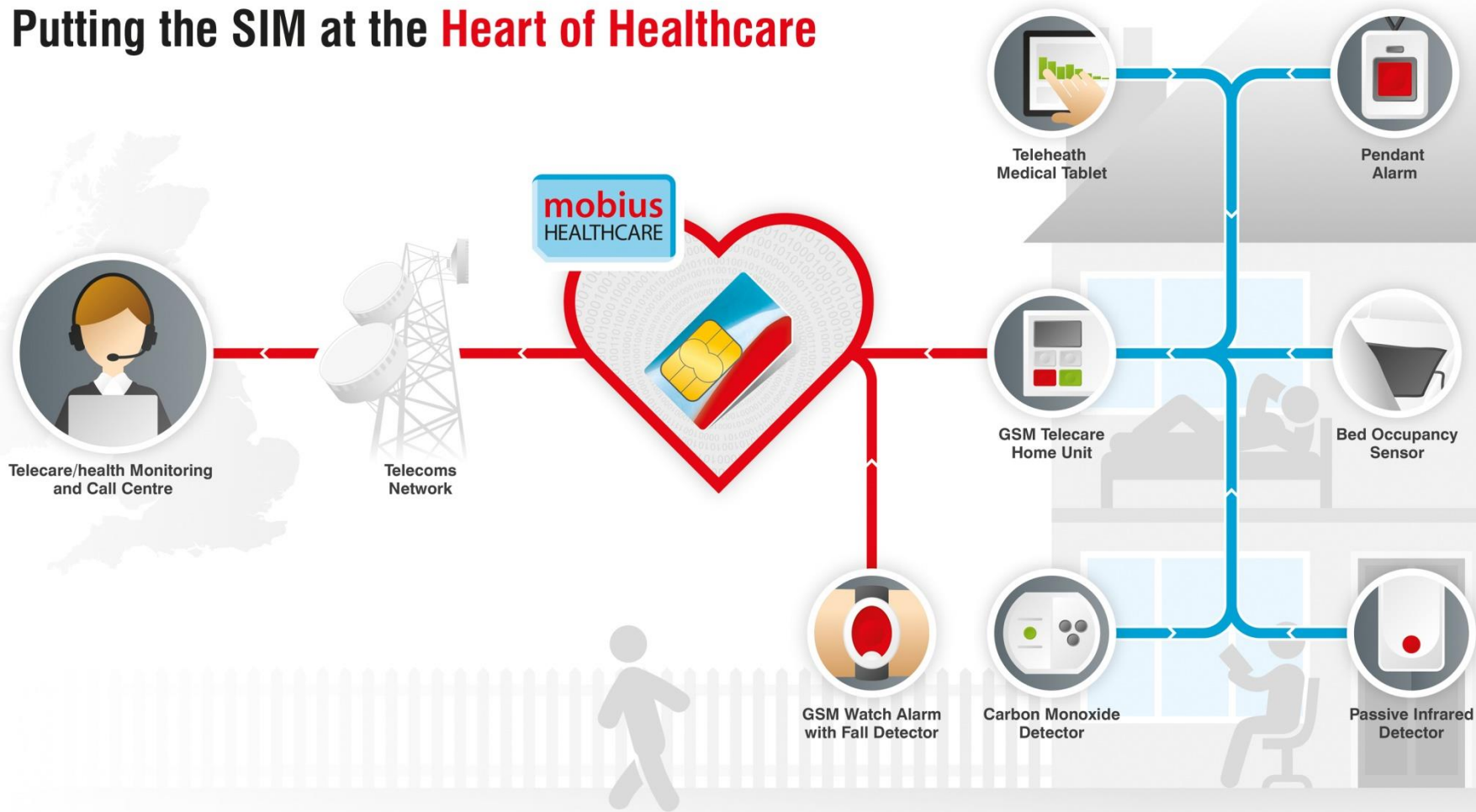
Mobius Telecare the world's first SIM cards specifically
configured for use in Telecare and Telehealth devices

Agenda

- Why is a SIM important?
- Case Study
- What can be achieved
- Security
- Considerations for the future



Putting the SIM at the Heart of Healthcare



Case Study – Amica24

The Status Quo

- SIMs perform ok, but not reliable enough for Telecare
- Worcestershire diagnosed their own issue.
- Frequent engineer visits
- Low confidence

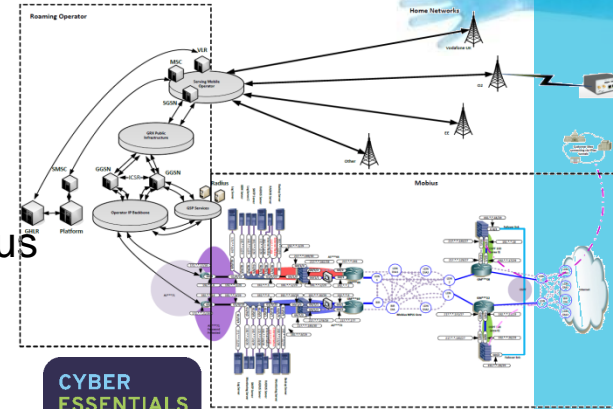
The Outcome/Benefits

- 100% reduction in service calls
- All prior “coverage issue” sites now online
- Long Term Partnership
- Visibility – Quality of Reporting
 - Accurate
 - Reducing Admin Time & Cost



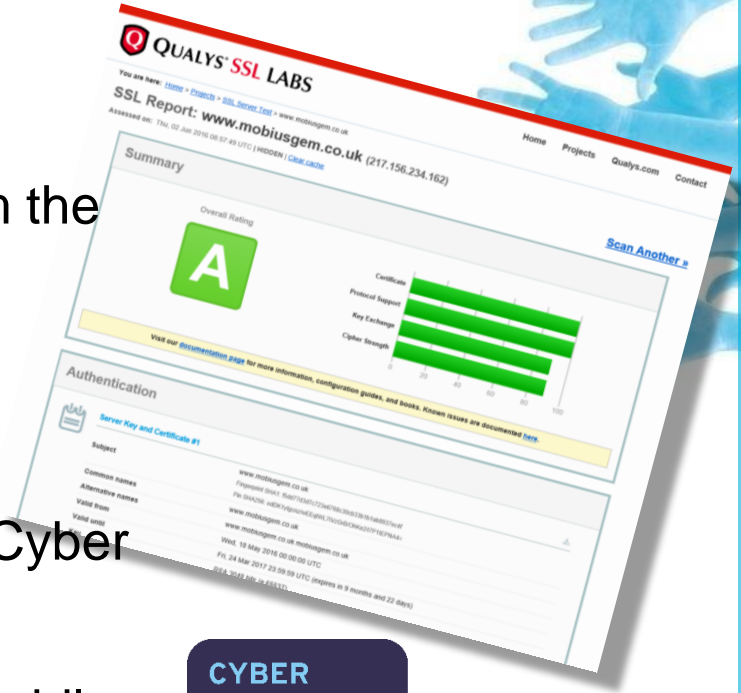
What can be achieved

- Proven uptime – 99.996% - 3 Year Average
- Dual location network – Multi-path – Auto-failover (4s)
- TSA QSF Accredited – Since 2017
- Strong Support – ISO9001:2015
- Security PEN Tested - PCI DSS & Cyber Essentials Plus



IoT Security

- Built for credit card level security from the ground up
- Only IoT MVNO to have full PCI DSS Accreditation
- Only IoT MVNO to have PEN tested Cyber Essentials Plus
- Ability to provide full off-net Private Mobile Network (PMN)



Benefits of Mobile vs PSTN

Reliable, Measurable, Available

- Using the network as intended
- High Availability
- Multiple Network Paths
- Multiple Core Network Paths
- Technical Support
 - Integration
 - In life – measurable and defined



Considerations for the Future

Now

- Support with device and monitoring centre integration
- ARC VPNs available at no charge
- How secure is the end to end system?
- Analogue tones become more unreliable by the day (PSTN & Mobile)

Later

- Renewal of SIMs in units
- Multiple underlying suppliers
- Multiple VPNs
- Consider 4G devices for longevity





mobius
NETWORKS
.co.uk

PUTTING THE SIM AT THE HEART OF HEALTHCARE

Mobius Telecare the world's first SIM cards specifically
configured for use in Telecare and Telehealth devices