

A man with white hair and glasses, wearing a dark quilted jacket and a blue scarf, is sitting on a wooden chair outdoors. He is looking towards the right side of the frame. The background features a paved path, a grassy area, a river, and a bridge in the distance. The scene is set in a park-like environment with trees showing autumn foliage. The lighting is soft, suggesting late afternoon or early morning.

DORO 450

# DORO IN BRIEF



# DORO CARE COMPLETE OFFERING



DISPERSED ALARMS



MOBILE GPS  
ALARMS



REMOTE VISIT  
CAMERA



PERIPHERALS



ALARM RECEIVING  
CENTRES



# DORO 450

GPS pendant Doro 450 is a portable social alarm with positioning and voice capability

Small and comfortable design, easy to carry around at all times

Reliable and safe, long battery time

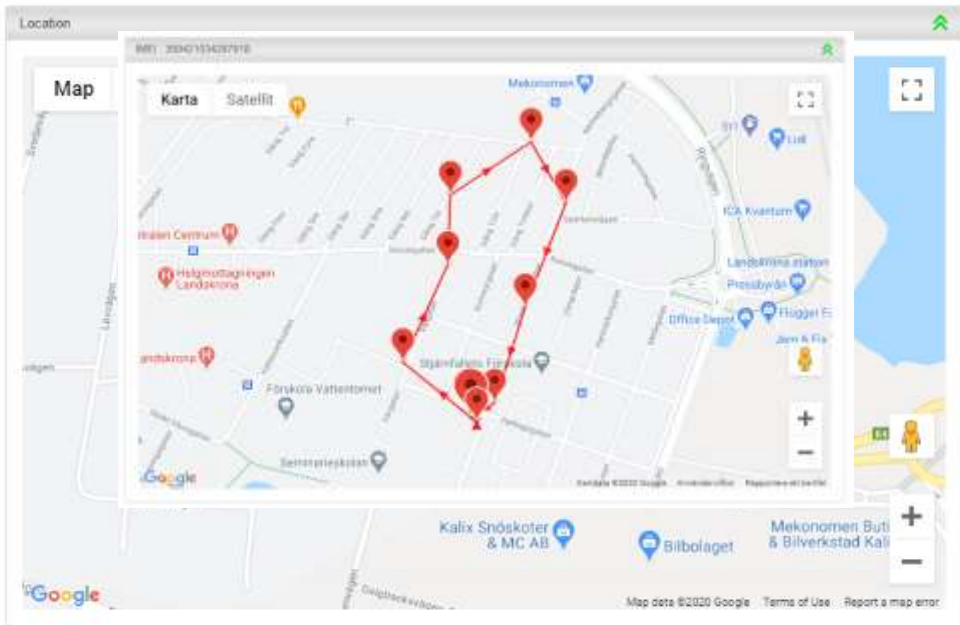
Self-activated and automatically triggered alarms, including fall



# PORTAL i-CARE<sup>®</sup> ONLINE

Doro 450 sends regular heartbeats with vital product parameters. Product status is presented in i-care<sup>®</sup> online (ICO):

- Battery status
- Signal strength
- Position, including history
- Step counter, including history



Login to ICO and demo



# TRIPLE POSITIONING



## SATELLITE POSITIONING

Prioritized technology that works with high precision with an open sky but may have problems inside buildings or even inside a city with high rise buildings.

- GPS (US)
- Glonass (Russia)



## Wi-Fi POSITIONING

Scan for Wi-Fi equipment and is located based on information where the Wi-Fi unit is positioned.

Normally high accuracy in dense populated areas.



## BEACON POSITIONING

The base contains a beacon.

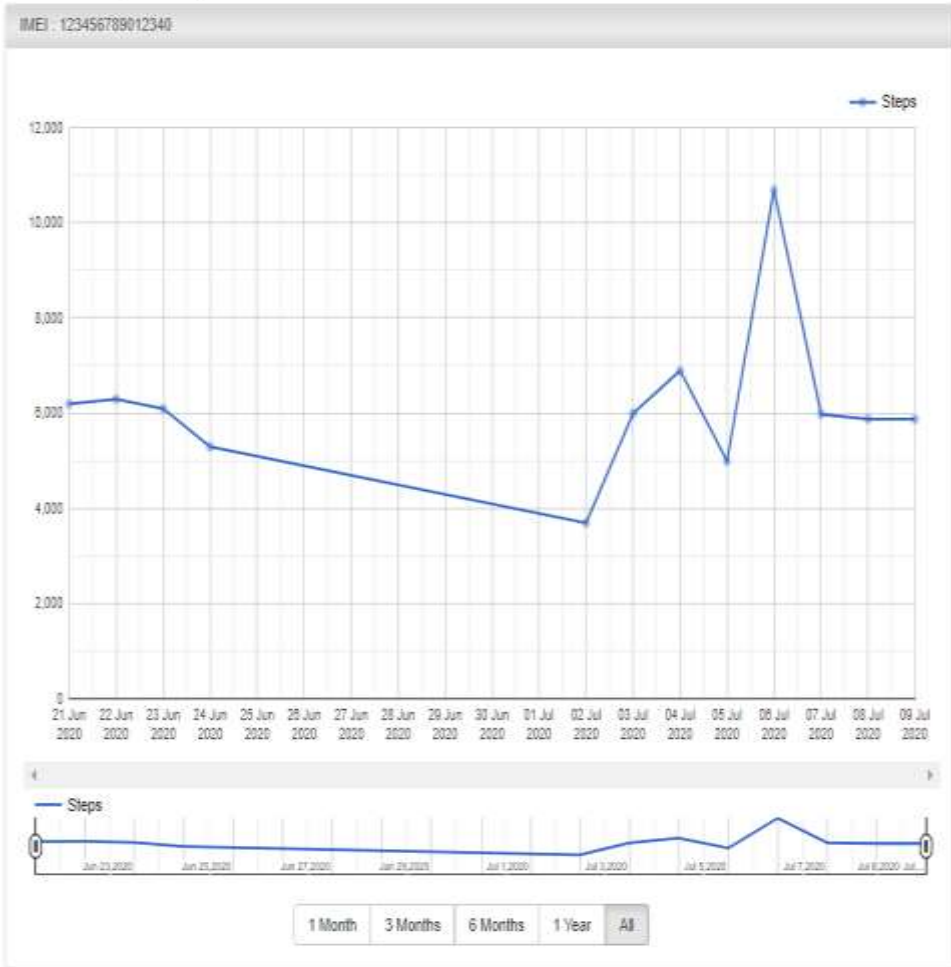
When the unit is within range this information is transferred as position information.

Range around 20 meters.

# FALL DETECTION

- To prevent falls is the most important factor
- But, in the case of a fall it is essential to get help as quick as possible
- Two sensitivity levels
- Option to manual cancel the alarm during grace period





Back

# STEP COUNTER

Physical activity is important!

- Seniors are recommended to reach 30 min walking five days a week and should aim for 7000 steps per day.

Doro 450 has a built-in step counter, and tracks step history as well

[http://www.fyss.se/wp-content/uploads/2017/09/FYSS-kapitel\\_FA\\_aldre\\_FINAL\\_2016-12.pdf](http://www.fyss.se/wp-content/uploads/2017/09/FYSS-kapitel_FA_aldre_FINAL_2016-12.pdf)





# HIGHEST LEVEL OF SECURITY

- Dual back-up communication routes
- Redundant servers
- FOTA support
- SCAIP alarm protocol



# DIFFERENT ALARMS

Active and passive	Manual alarm Geofence alarm Fall alarm
Off-line	ICO can be setup on an organization level to generate alerts if the device is off-line for a certain period. The alarm is sent as an e-mail or SMS to the administrator
Technical	Provide the receiver with status info around the product: Battery low/out & Power on/off
Track now	An option to get 30 minutes of positions sent on request





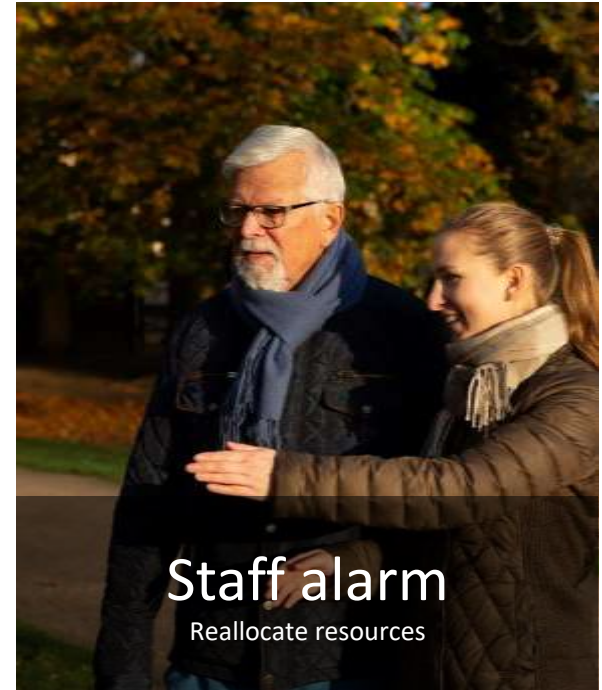
## CALL ME SMART FEATURE!

Pressing the side key send a pre-defined SMS to as example a relative requesting the to call back

The SMS contains position information

## MOBILE SOCIAL ALARMS

# DIFFERENT APPLICATIONS





# DORO 450

A mobile social alarms enables the user to live a more independent and active life for longer

- Freedom
- Independency
- Active life



"My husband doesn't always find home anymore, but I would love him to go out with the dog."





QUESTIONS?  
THANK YOU!

**WE ARE  
VISIONARY**



**WE ARE  
TRUSTWORTHY**



**WE CARE**



**#WE ARE  
DORO**