



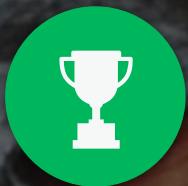
DORO ELIZA PRODUCT INFORMATION

Wayne.odonnell@doro.com
07885 457 494

A background image showing a close-up of an elderly woman on the left and a man on the right, both smiling and looking upwards. The image is slightly faded to allow the text to be prominent.

We believe that life is for living

We empower seniors to get the most out of every day.
We enable independence and ensure peace of mind
when it matters most.



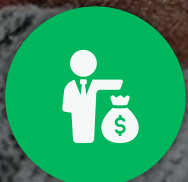
#1

Market leader in
Northern Europe
in senior care technology



3M+

Assisted seniors



1.7BN

Annual revenue
(SEK)



34%

5yr annual average
growth in Care

Doro Group

Helping seniors is the core of our business. By leveraging technology we make sure seniors can live an active and independent life.

Founded in 1974 in Sweden as a bold challenger to the state run telecoms monopoly, Doro still carries a strong part of Swedish heritage and tradition.

Doro Care:

Market leader in
Telecare in three markets:
Sweden, Norway and
UK



8

Countries

580

Local authorities,
NGOs and
private organizations



Doro Phones:

Market leader in Europe in terms
of senior feature phones with
almost 40% of the volumes
and close to 50% of the value



27

Countries

300

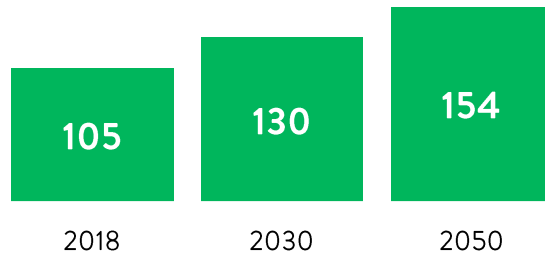
Telecom operators,
specialists
and retailers

Senior care faces acute challenges

Technological solutions are needed to enable senior care at home while reducing costs for society

Demographic changes

Growing older population
+65-year population in Europe



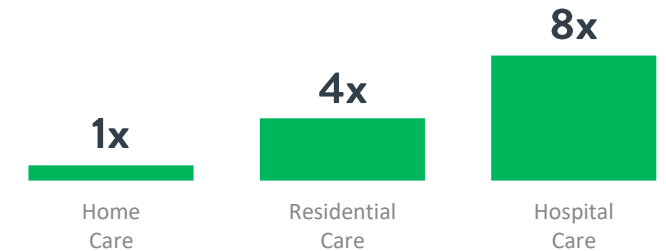
Growing need for care in society

Working age share of population,
fewer will have to support more



New technologies & innovative solutions

Care is several times more costly in
residential homes and hospitals



Technology

Analogue connectivity

Standalone systems

Digital network replacing analogue

Integration of product, service
and software

Mobile and apps

CURRENT
MARKET
is
RESPONSIVE

FUTURE
MARKET
will be
**PREDICTIVE,
PROACTIVE
& PREVENTIVE**

Response to alarms
and sensors

Support to carers
e.g., digital passes

Active monitoring / behavior
change detection

Empowering carers
to be effective in their work

Well-being applications

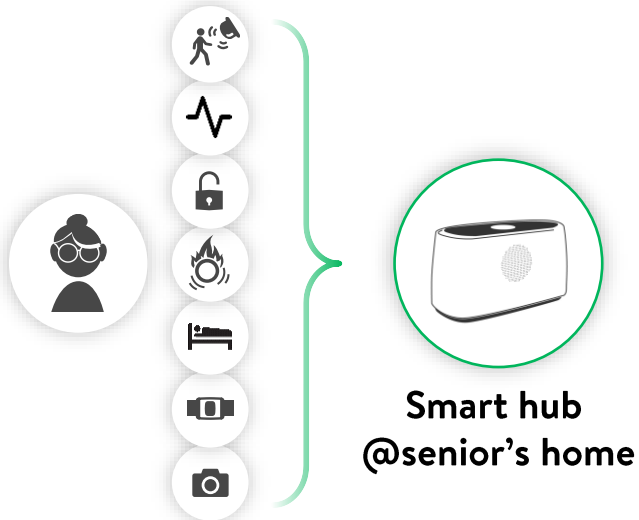
Solutions



**Next
generation
solutions will
transform the
market**

Integrated technology solution for tomorrow's services

DEVICES & SENSORS

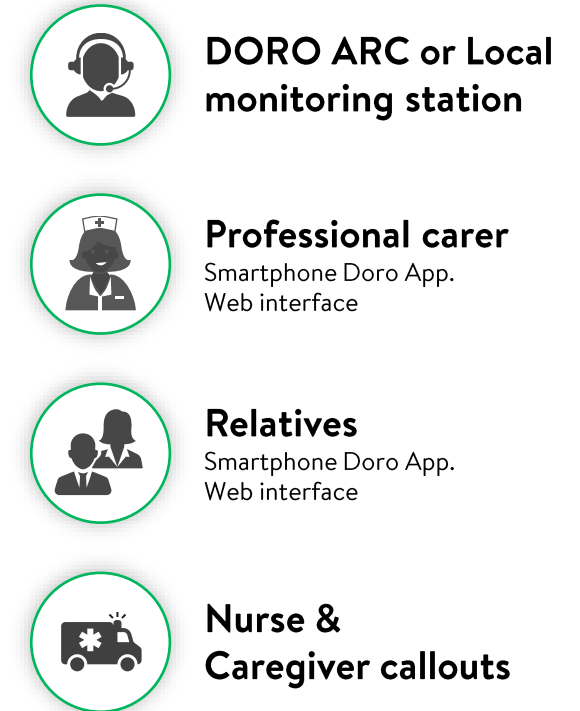


Motion sensors (movement detection)
Environment sensors (temperature, smoke detection)
GPS tracking (location detection)

DSP DORO SERVICE PLATFORM

Best in class,
seamless, flexible,
secure & scalable

CONTACT CENTRE



Predictive, proactive and preventive services for the future



Installation
& Service



Outdoor



Environmental
& safe



High vision



Alarm detection



Alarm handling



Indoor safety



Relatives



Nurse / caregiver
callout



Open / Close



Planning & Reports



Activity



Visits & Notes



Medical &
Tele Health



Proactive response
& video
communication



And more...



DORO ELIZA

Innovative SmartCare hub that raises the bar in Technology Enable Care (TEC)

Contemporary design, fits nicely in the home

Reliable and safe communication over 4G and other digital IP-networks

Part of a complete solution and compatible with sensors for TEC today and tomorrow



CONTEMPORARY DESIGN

Fits nicely in the home

Stable, vertical design minimise the foot-print
and is easy to place on smaller tables and windowsills

Blends in with modern consumer electronics
in the user's home

Dedicated focus on **sound quality**

- Placement of speaker
- Adapted sound for seniors and HD-voice

Swedish design in all aspects



CONTEMPORARY DESIGN

Simple clean keypad

ONE tactile integral alarm button

that is easy-to-use in distress:

- Backlit and light feedback
- Compliant with the EN 50134 standard

Dedicated button to cancel an alarm:

The button is normally dimmed and only highlighted in the occasion where cancel is allowed

Two programmable touch buttons with visual feedback:

Touch buttons allows more flexibility in usage as well

Easy to clean surface



Reliable and future proofed

Connect up to 50 different sensors and accessories, through various interfaces:

- **869MHz** - Long-range, reliable, well-established social alarm radio
- **Bluetooth 5** - Low Energy enables longer battery life and Long Range enables improved coverages and reach
- **Zigbee** - Commonly used by smart home sensor. Enables possibility for a wide range of future accessories
- **Wi-Fi*** - Wireless connection makes it easier to place the device in the user's home, and further redundancy via the fixed broadband

* Wi-fi connection requires USB expansion (accessory)





FUTURE PROOFED

Video and communication capability

Doro Eliza is an **innovation for the future**.

Built on the latest technology that enables a wide range of smart services both today and in the future such as **video monitoring** and **video communication**.



2G

3G

4G
LTE



FUTURE PROOFED

Reliable and safe communication

Superior coverage and redundancy

- Strong coverage both in cities and in rural areas
- Roaming SIM further increase redundancy and secure a fail-safe communication

Clear sound and speech

- Seniors experience a much better sound quality thanks to HD-sound and adapted sound for their specific needs. Possible to connect to a hearing loop (HAC) system
- Improved voice communication due to full-duplex functionality

Extensive and powerful Firmware Over The Air update (FOTA)

- Continuously ready for new functional updates
- Secure and safe update process



FUTURE PROOFED

High security and reliability

TLS v1.2 or higher encrypted voice communication and data traffic

- Heartbeat functionality assures that the device is always online
- Periodically monitoring of connected triggers and sensors

Battery

- Battery backup 72h, and exceeds the European social alarm standard requirements and is automatically switched over in the event of a mains failure

i-care® online device management system

- Smart and efficient monitoring, configuration and FOTA ensures latest firmware. The system is clear, comprehensible and saves time, effort and money

FUTURE PROOFED

Connectivity options

- Built-in high performance cellular antenna, and possibility for external antenna in case of network coverage issues
- USB-ports for expansions, such as a Nano Wi-Fi adapter (accessory)
- SIM card slot, battery and maintenance USB port mounted underneath
- Compartment cover on the backside “hides” the USB-port for future connectivity options
- Volume button and button for pairing triggers and sensors are hidden behind the compartment cover

Maintenance buttons
under the compartment cover

Y-Key
X-Key
Link Key



Power
Supply

Power
Switch

External
Antenna
connector

Ethernet
port

2x USB
ports

I/O
Connector
3.5mm audio out
or wired input



DORO ENZO

Doro Eliza is delivered with alarm trigger
Doro Enzo - versatile, long-range radio trigger
that is compatible with all Doro care phones
and can be used in the shower or bath (IP67)

- Small, comfortable and non-stigmatizing design to encourage the user to wear it
- Wear around the wrist or neck.
Adjustable neck cord
- 'Easy press' on wrist or on lanyard
- Up to 5 years battery life, replaceable battery
- Frequent 'heartbeat' checks ensures a reliable connection



FUTURE PROOFED COMPLETE SMARTCARE DIGITAL HUB

SAFE.

RELIABLE.

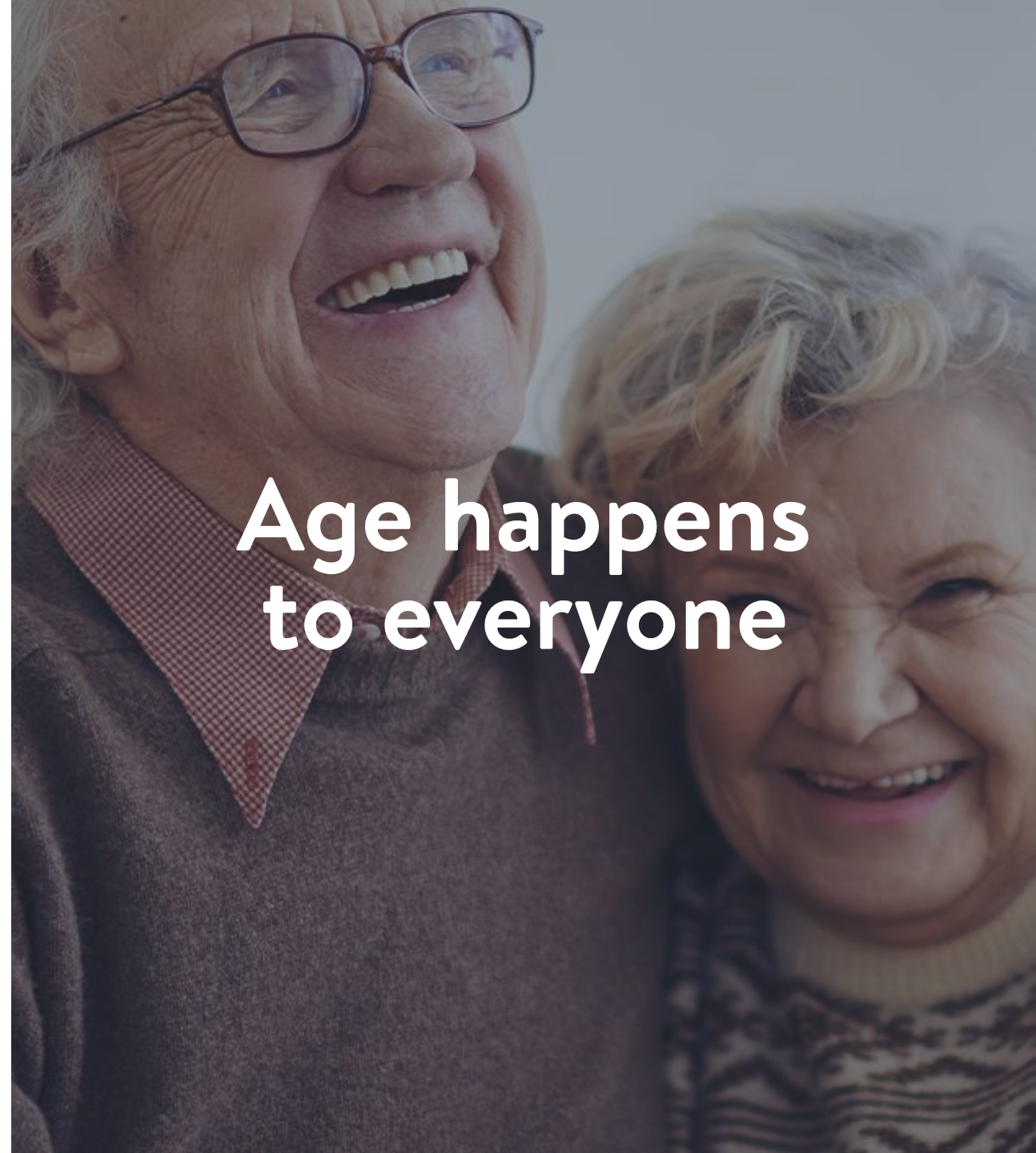
POWERFUL.





**A nation's greatness is
measured by how it treats
its weakest members.**

Mahatma Gandhi



**Age happens
to everyone**



Questions? Thanks you!

Wayne.odonnell@doro.com
07885 457 494