

AN INTRODUCTION TO CHIPTECH

Your Digital Telecare Partner

Chiptech is a design and manufacturing business that builds first class Telecare and Personal Safety products for the digital age

Emily White
Business Development Manager

Content

- Who we are
- Who we work with
- Monitoring
- EVA
- GO
- Lone Worker
- SmartCare Response App
- Peripherals





Chiptech design and manufacture a range of **innovative** and reliable solutions to **support** people to maintain their independence and enhance their safety.

Established in 2000
UK Office opened in 2019

Research & Design
Manufacturing in house
Customer Support
Digital Expertise
Owners of all Intellectual Property
Connect to all monitoring platforms
Most cost effective solutions available for the digital change

Only digital product to be recognised and endorsed through AGE UK

19k digital connections in the UK since September 2020
300k digital connections Globally



Who we work with and what they say



+ more.. Chiptech supply into LA, Housing, Insurance, Charity and Monitoring



Customers and Service Users

"In the next 12 months the size of this contract is expected to grow exponentially and they have demonstrated their ability to meet our requirements on an ever increasing scale. The team at Chiptech are exceptional and have a refreshingly proactive approach to customer service and problem solving. We have worked with them to deliver unique and innovative solutions to our council partners and their willingness to work with us to help tailor their solutions to help us achieve our goals is fantastic."

"Our current very strong partnership, which has got us into such a positive position with Loved Ones, is a true testament to Chiptech's strong technical, customer and delivery focus – and your innovation pipeline is also a clear indication that you are thinking about (and delivering to) customer needs in a way that is genuinely unmatched in this industry"

"Overall I'm very impressed. It was easy to set up, easy to charge, comfortable to wear and the response from the monitoring team was quick and reassuring. They've thought of everything with GPS, fall-detection and by including a second pendant in the box."
Trustpilot

"I bought the top of the range of alarms , GO ANYWHERE , with GPS. Excellent product and service during set up and testing. Very helpful and very pleasant to talk too . I have no hesitation to recommend this alarm"
Trustpilot



Who we work with – Monitoring and Supply

Monitoring



Jontek



PatriotSystems



appello

Tunstall

Chubb



- We connect to all major monitoring centres
- All alarm events are fully mapped on every centre
- Best practice available to be shared through Chiptech customer groups
- Covering TS50134-9, SCAIP SS91100 and CONTACTID protocols

Interoperable



aico



Firehawk
SAFETY PRODUCTS

HEPRO



- We believe customers should have choice
- We work with best in class providers of technology
- We work with our competitors and believe in openness
- We provide solutions to meet new fire standards
- We provide modular systems for home and housing

Connectivity



- We do not lock customers into a SIM provider
- We stock all SIM variants offering EE, Vodafone, 3 and T-Mobile
- We configure and test all your units FREE OF CHARGE
- We provide best in class roaming Algorithms – always on
- We heartbeat to dual sources

EVA

EVA is a digital telecare system with voice guided installation and a huge array of digital benefits.

This voice enabled step by step process talks the customer through the install and governs each step for safety.

With over. 200k EVE/EVA devices in use today, EVA is a matured digital alarm unit with first class safety features.

Chiptech provide full build, configuration and branding Free of Charge. Units are ready and connected out of the box.

EVA can be optionally monitored by family, friends or caregivers via the Response App, with alerts for help escalated to monitoring if required.





EVA

KEY FEATURES:



VOICE GUIDED SET UP



SPEAKERPHONE



300M PENDANT
RANGE



MULTIPLE SIM
OPTIONS



70HR BATTERY
BACK UP



CONNECT TO GO



CLOUD CONNECT
UPDATES



ADVANCED ROAMING
ALGORITHM



ALARM APP
COMPATIBLE



MULTIPLE WEARING
OPTIONS OF PENDANT



HEARTBEAT SAFETY
FEATURES IN
MONITORING AND
PERIPHERALS



CONFIGURATION AND
BRANDING FREE OF
CHARGE



GO

Chiptech GO is a digital personal help device with GPS location and fall sensing capabilities.

Whether you are at home, heading to the shops, walking through the park or going to visit friends, GO has your safety covered every step of the way. GO encourages you to have more independence in your day to day activities, both at home and out and about. You can be confident knowing that help is at your fingertips.

“

I find it reassuring that my GO pendant works indoors and outdoors!. Love my GO pendant!

”



“

Works beautifully.
Really pleased with it
and gives me
confidence when out
and about.

”

GO

KEY FEATURES:



GPS



SPEAKERPHONE



MULTIPLE SIM OPTIONS



SAFETY VOICE
ANNOUNCEMENTS



CONNECT TO EVA



CLOUD UPDATES



1-2 MONTH BATTERY
WIRELESS CHARGER



FALL DETECTION



IP67 WATER RATED



ADVANCED ROAMING
ALGORITHM



LOST MODE / FLIGHT
MODE & RFID



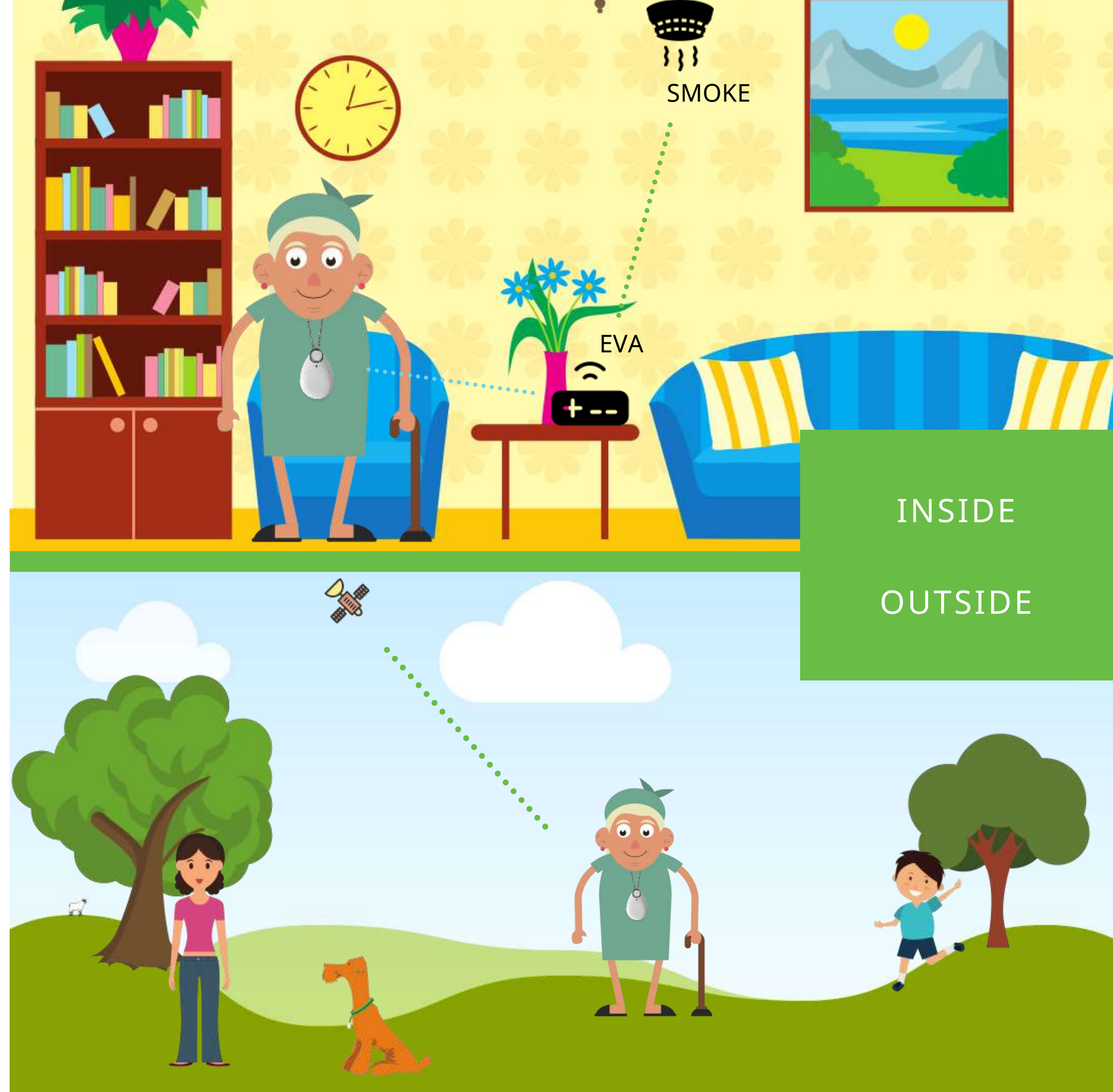
MULTIPLE WEARING
OPTIONS & COLOURS

CHIPTECH GO INDOOR & OUTDOOR PENANT

One pendant for everywhere

GO can be used as a standalone device or can be paired with EVA:

- Combining into a bigger Telecare package (Other sensors)
- For a backup communication path to monitoring if mobile signal is poor





GO

PERSONAL SAFETY FOR EVERYONE

OUR GOAL WAS TO CREATE A DEVICE
THAT BREAKS DOWN THE STIGMA IN
TELECARE

GO IS A PERSONAL SAFETY DEVICE

GO is also a BS8484 compliant lone worker device with options which include Silent DURESS calls and speaker control from monitoring

One of our clients in Australia, BlueForce, captures GO perfectly in this promotional video.
The care giver using her GO whilst commissioning a GO.

<https://youtu.be/mIOkeGa5rWE>

SMARTCARE RESPONSE



SmartCare® Response is a monitoring App for connecting family and friends to the users of Chiptech personal emergency response systems (PERS).

When a help button is pressed, emergency alerts are sent to all responders simultaneously, notifying them via push notifications and text messages.

Through the App, users can call the device, view who has responded, what action has been taken, and they can in-app message each other during an event.

ACCESSORIES

We offer a range of supporting accessories to our base units. Our Pearl transceivers (Pendants and Fall Detection), can detect falls and allow users to easily call for help when they cannot reach their base unit.

Our GO Pendant can also be connected to EVA and used both inside and outside the home.

Our SID range allows for the connection of a wide range of external peripherals.



PEARL PENDANT

Pearl Pendant

Pearl Easy Press

Pearl Advanced (with Fall Detection)

Pearl Brooch

Pearl Watch



WALL MOUNT HELP BUTTON

The Wall Mount Button is a fixed button for users to press to raise an alert for assistance.



SID CONNECT

Our SID range allows for the connection of a wide range of external peripherals.



HEALTH PERIPHERALS

Chiptech have partnered with Alert-iT to provide the best in Epilepsy Monitors. Alert-iT systems meet ISO13485 standards and are the most reliable on the market today.

Alert-iT Epilepsy products are integrated directly into EVA for an easy installation, timing and remote service options.

We offer:

- Pulse Companion Epilepsy Monitor
- Companion Mini Connect
- Guardian Epilepsy Monitor
- Enuresis Sensor



Firehawk
SAFETY PRODUCTS



aico



ENVIRONMENTAL PERIPHERALS

We offer a range of battery powered environmental sensors such as fire, CO and heat sensors to suit your requirements. Our environmental peripherals are made specifically for Chiptech and come packaged with a branded user guide for safe installation and testing.

Chiptech interface with both FireHawk and AICO sensors for the best in connectivity, quality, cost and regulation requirements.

PERSONAL SAFETY PERIPHERALS

This offering can be adjusted to suit the users individual needs so that their comprehensive telecare system helps keep them safe in all areas of their home.

We offer:

- Bed Occupancy Pads
- Bed Occupancy Ribbons
- Chair Occupancy Pads
- Chair Occupancy Ribbons
- Door Contacts
- Pressure Floor Mat and Rug

Other peripherals can be easily integrated on request.





THANK YOU



www.chiptech.uk



emilywhite@chiptech.uk



01524 544427