



2iC-Care

November 2022

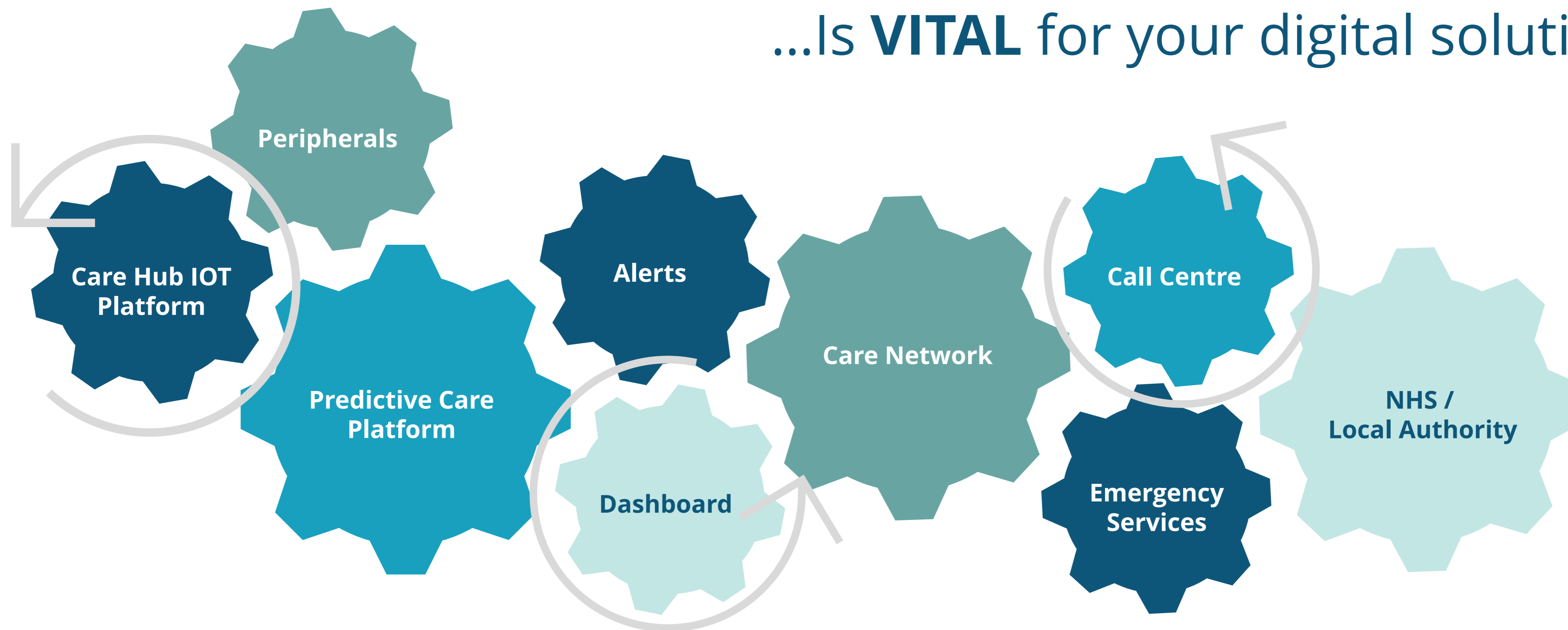
Interoperability





Interoperability ...

...Is **VITAL** for your digital solution



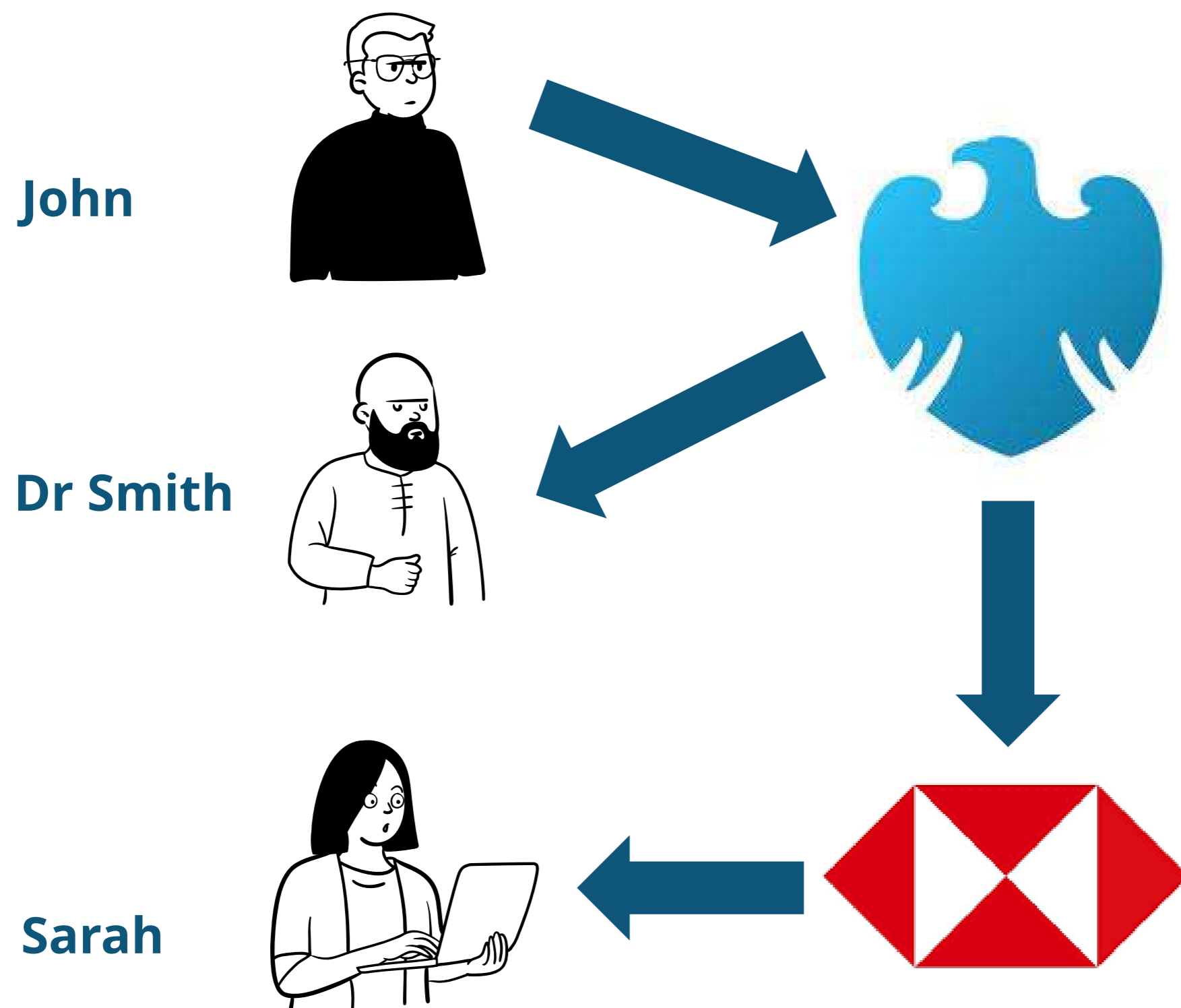
The **Internet of things (IoT)** describes physical objects (or groups of objects) with **sensors, processing ability, software, and other technologies that connect and exchange data with other devices and systems** over the Internet or other communications networks.



An example of Interoperability - banking

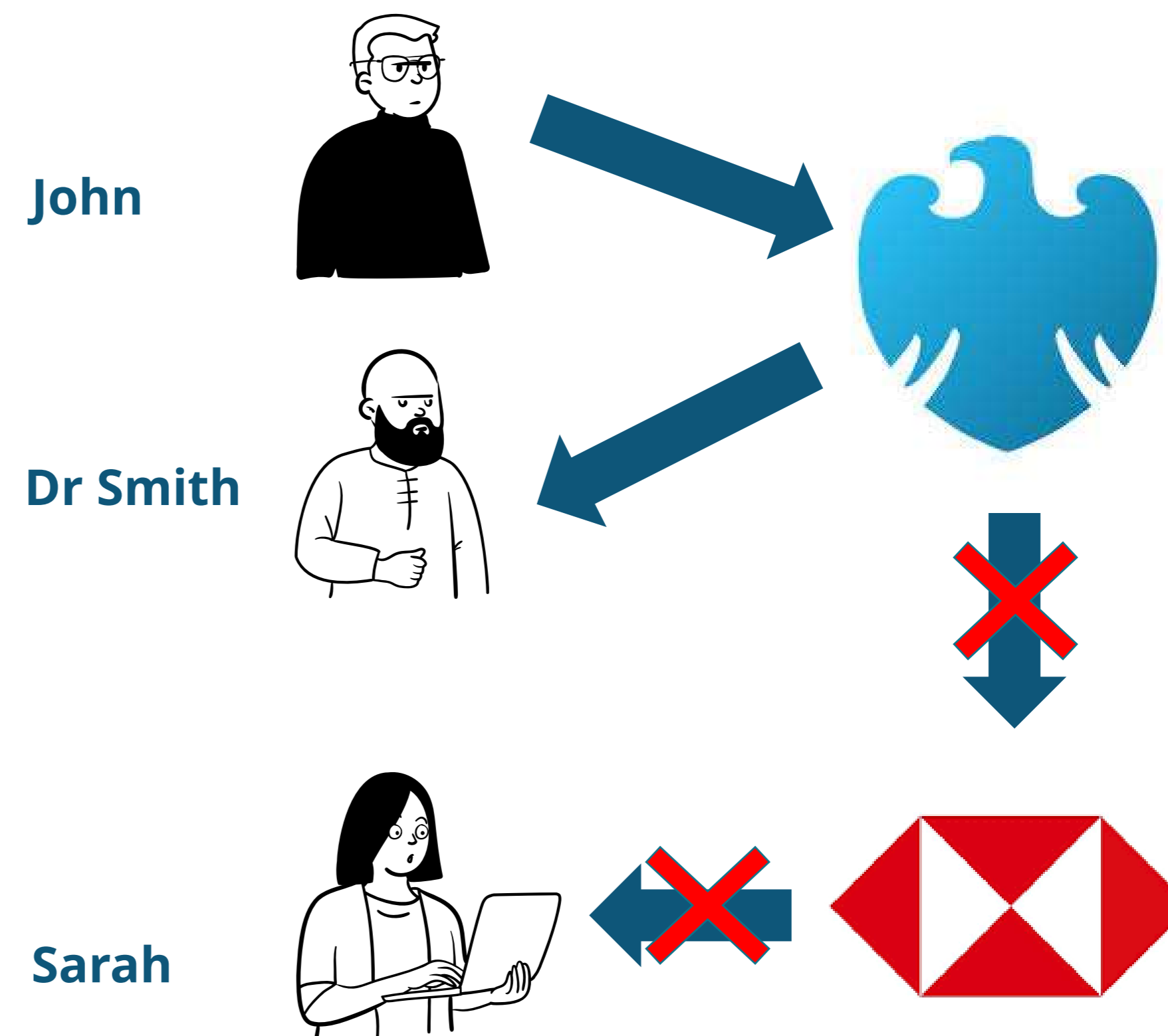
With interoperability

Internal bank transfers and bank to bank transfers are made possible



Without interoperability

Only internal bank transfers are possible.

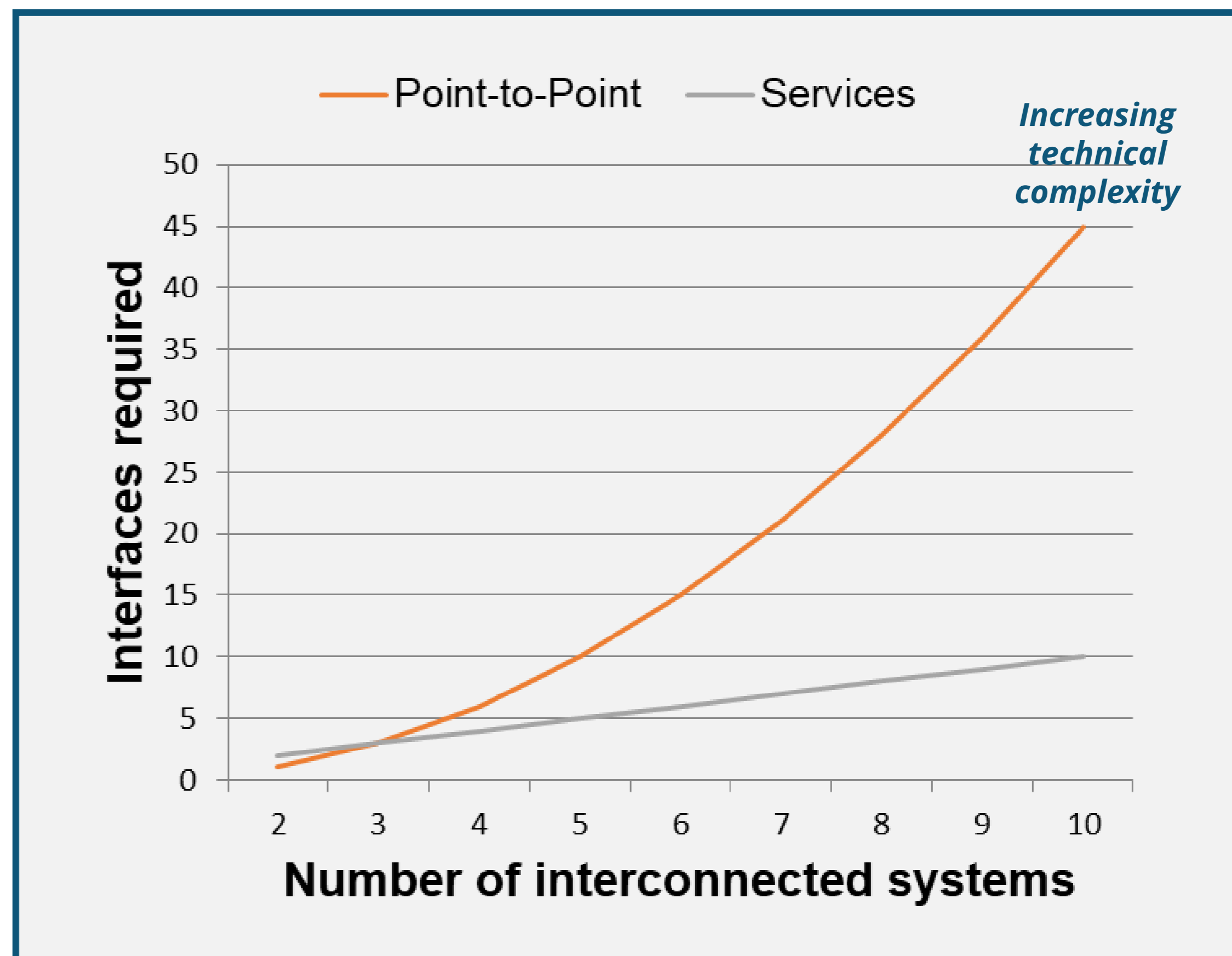
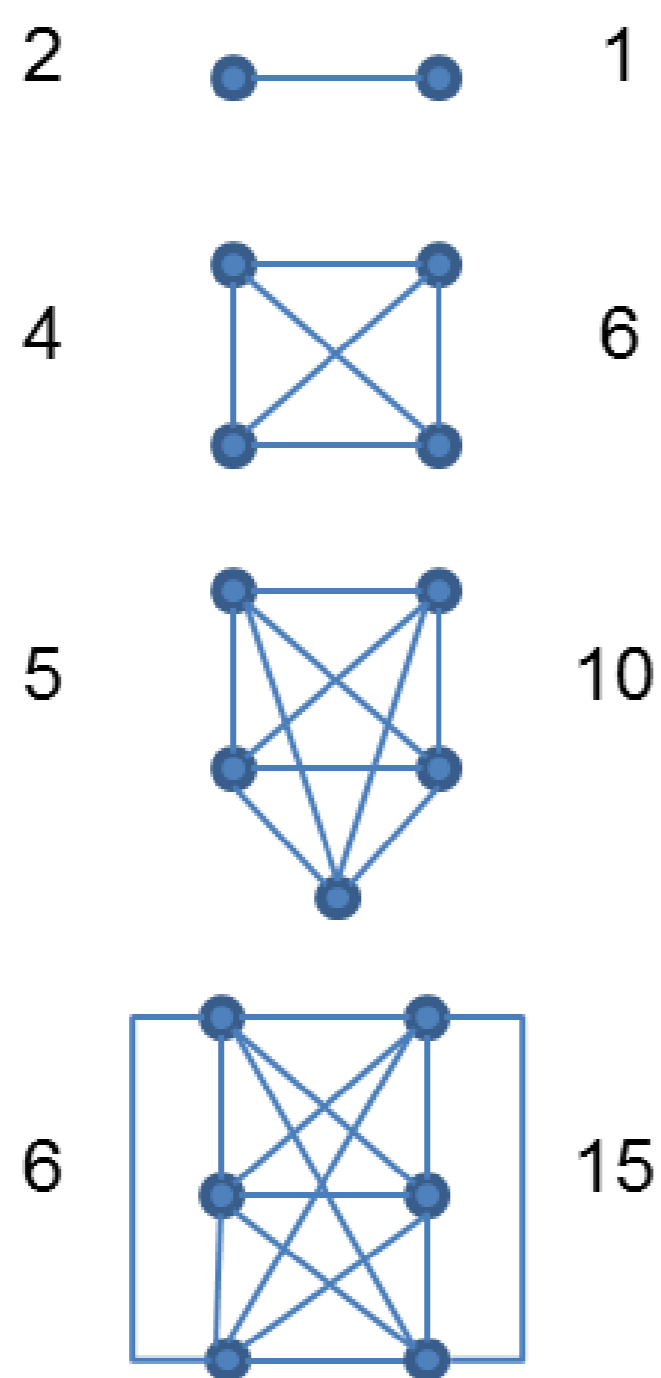




Complexity of proprietary protocols

As numbers of peripherals / connected systems grow, proprietary protocols become technically **too complex and expensive to create**.

Peripherals Interfaces





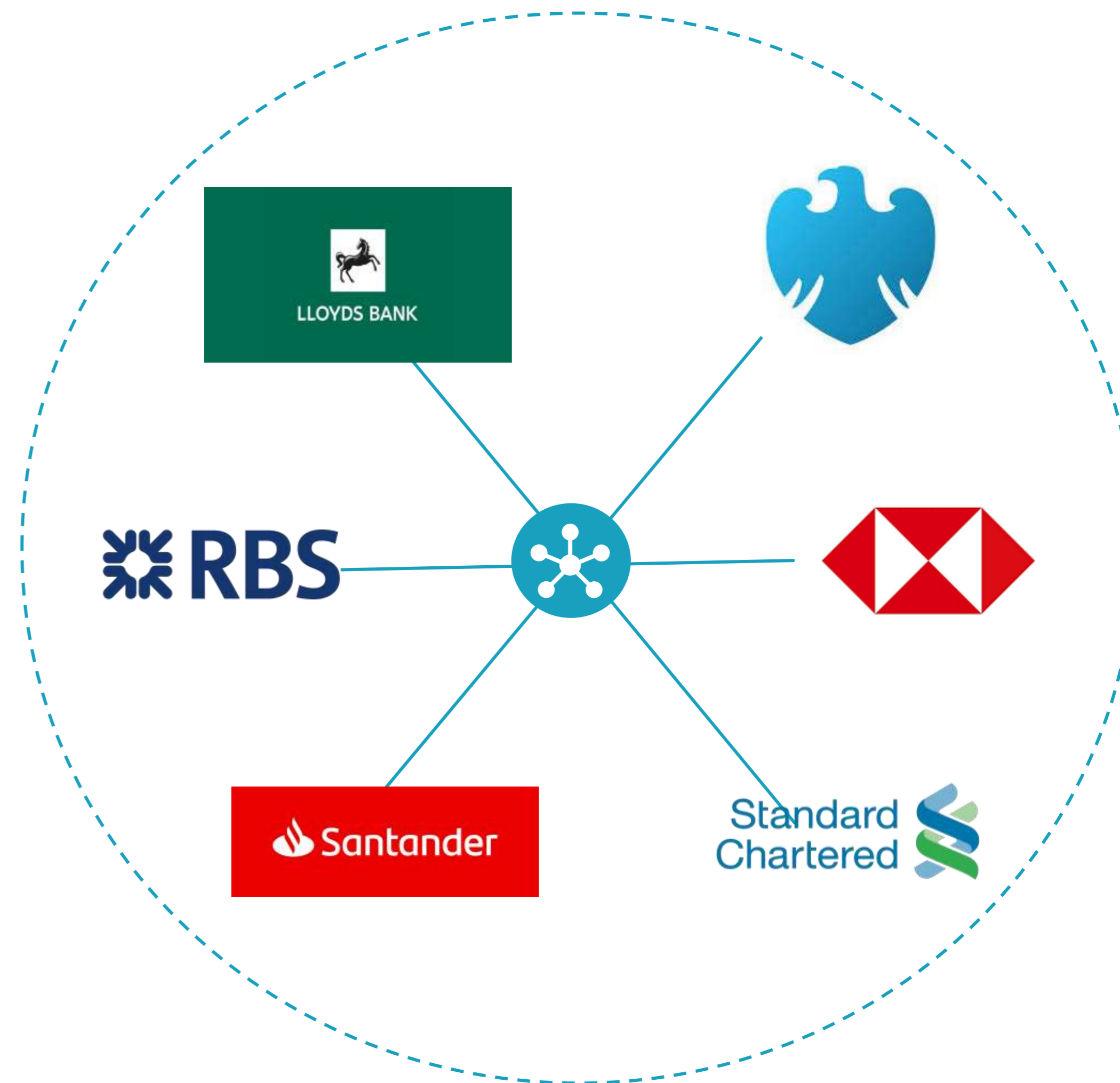
Open protocols reduce complexity

Systems Peripherals	Interfaces
1	1
2	2
3	3
4	4
5	5
6	6

Cheaper + faster to integrate new devices

=

Greater consistency
Greater interoperability





Why should I want to an interoperable / open protocol TEC solution?

The majority of budget is spent on the **High needs** service users

High needs users need a personalised solution.
(i.e. the right devices / right interoperability)

“I need to ...
Maximise the choice of device types”
(many hundreds of devices available)

“I want to delay/prevent **Low need** service users becoming **Moderate need**”

“I want to delay/prevent **Moderate need** service users becoming **High need**”

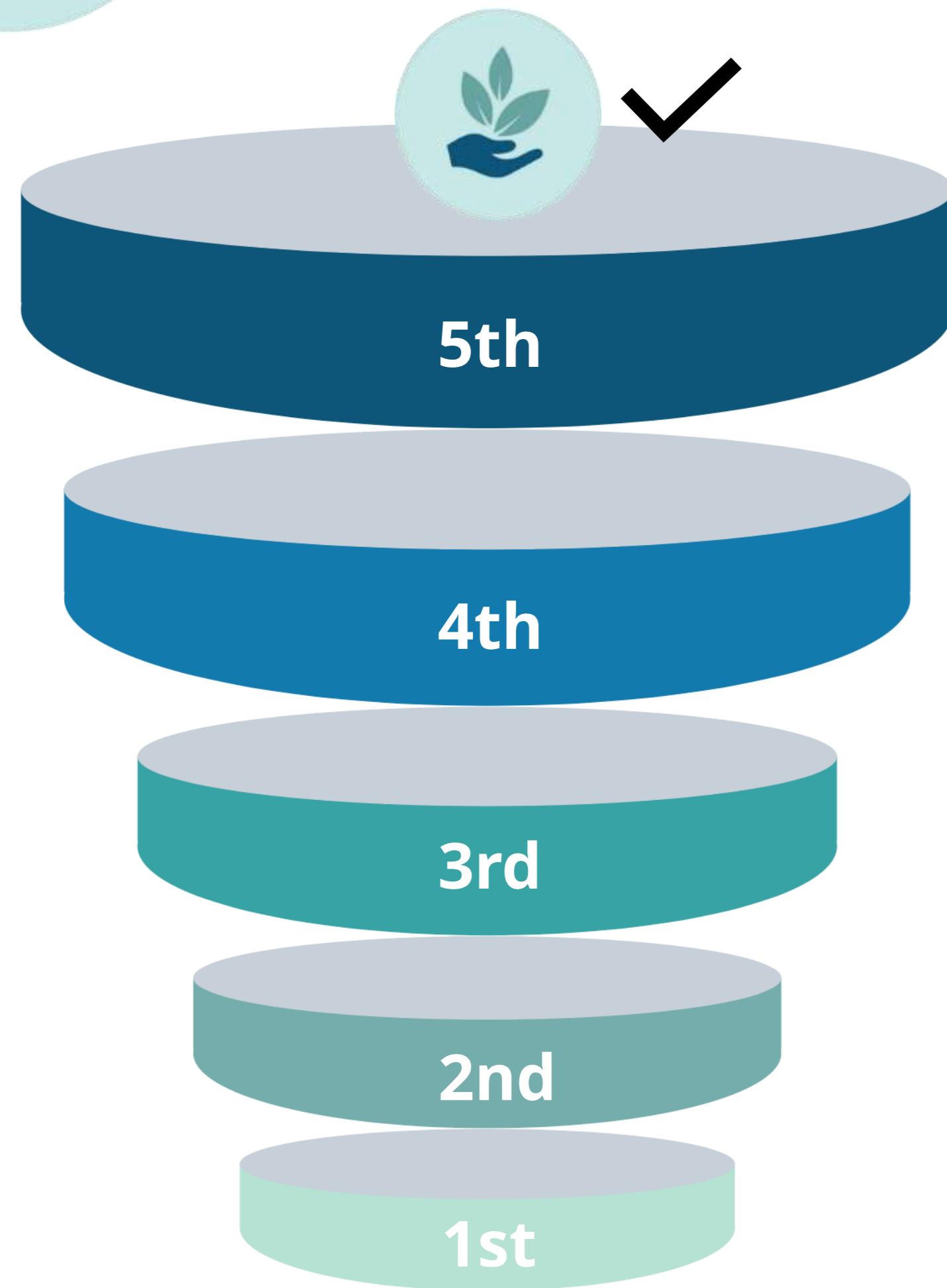
“I need to reduce ...
admissions/re-admissions to hospital
ambulance call outs
Carer call outs”



Interoperability doesn't stop at device choice

7

IOT Interoperability has gone through a number of maturity step changes



Generation 5: Integrating device data with Intra & Inter-Organisation operating procedures and process automation and improved collaboration

Generation 4: Device-to-device interoperability (incl. reduction in false positives & improved information accuracy)

Generation 3: Open architectures (enabling wider range of peripherals and systems adoption) and enhanced data aggregation

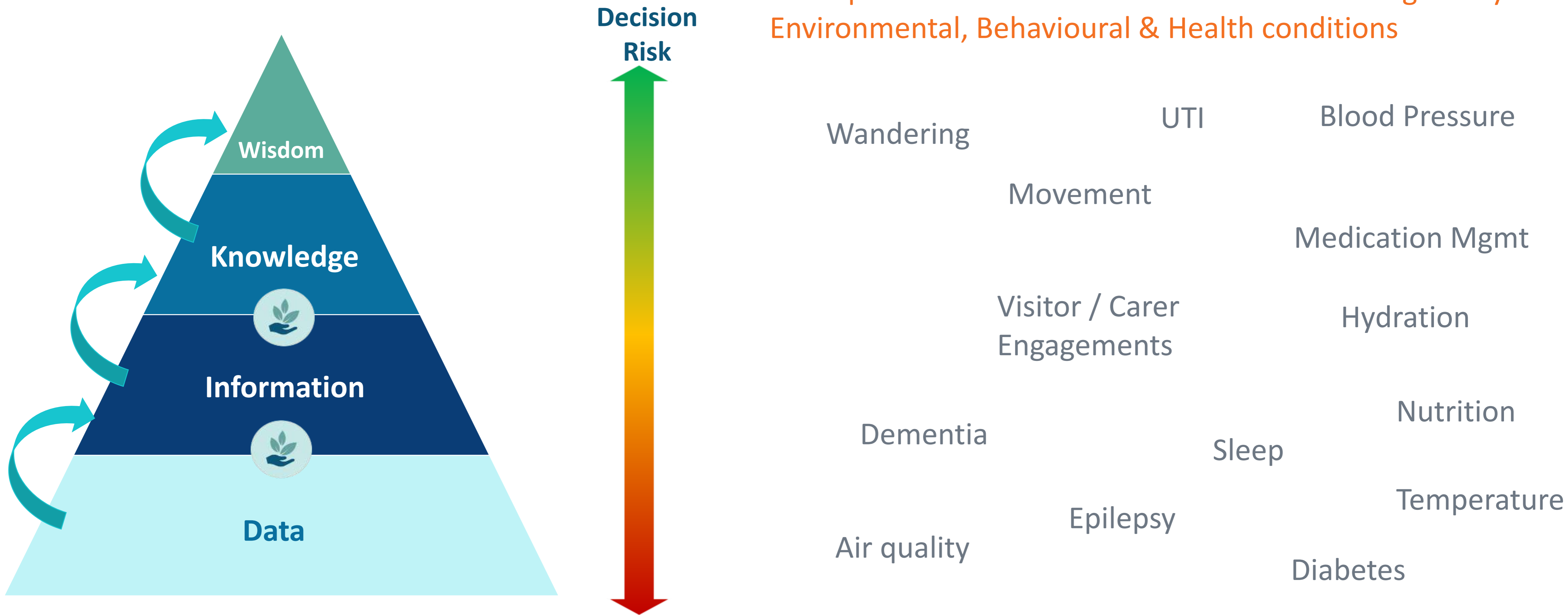
Generation 2: Some proprietary compatibility with other peripheral / system providers

Generation 1: Simple data capture exchange / cloud based data aggregation (highly proprietary)



Reactive alarms plus proactive monitoring/preventative care

Our Open Protocol means no limits to monitoring of any Environmental, Behavioural & Health conditions





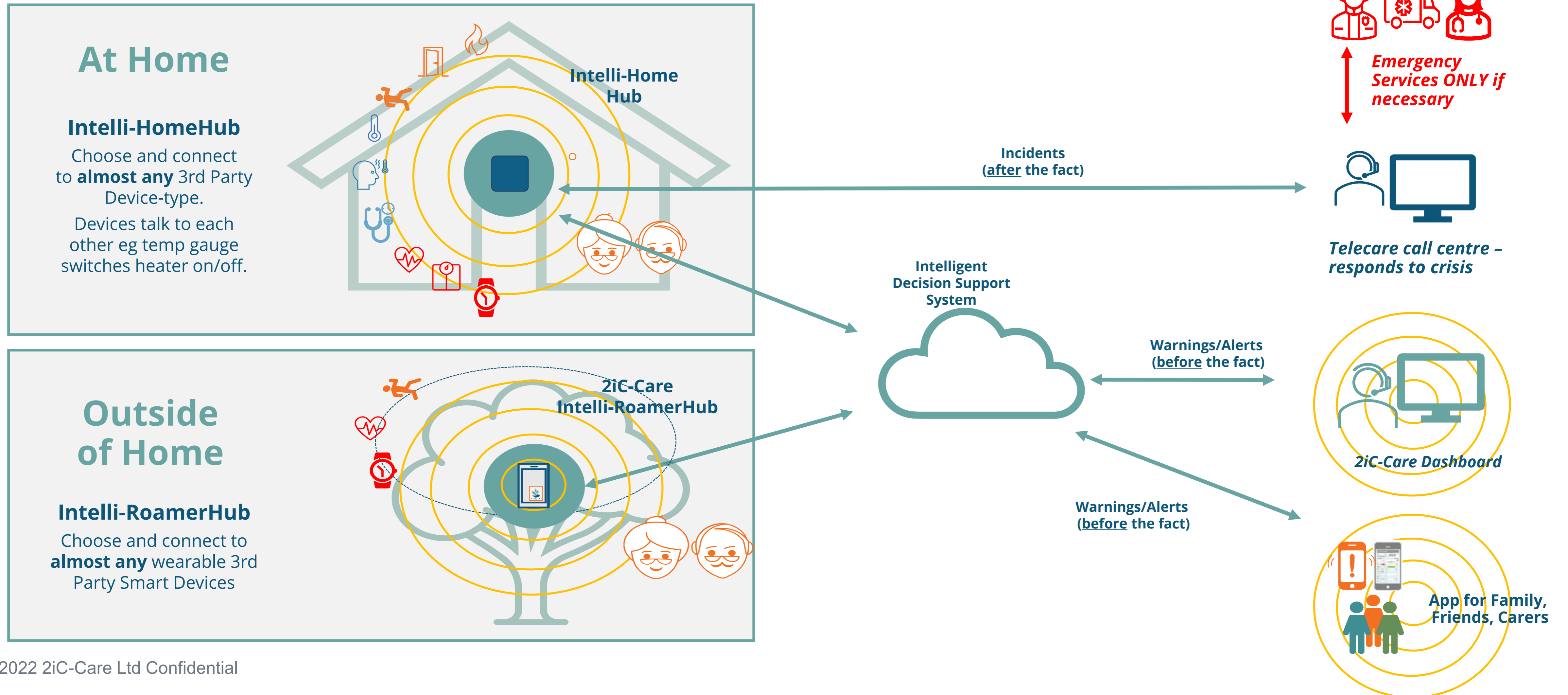
2iC-Care offers Freedom, Flexibility & Future proofing

Maximise your choice of devices

- ✓ Uses a mature **open protocol**
- ✓ Configured for use for the Tech-Enabled-Care & Telehealth care sectors
- ✓ We already connect to
 - 17 Care/health Device manufacturers
 - 22 Device types
 - 50+ Devices
 - 4 Wireless communication types
- ✓ **5th Generation Interoperability** with most **new device types rapidly** (circa 1-3 days)
- ✓ No need to replace your **existing devices**. Saving ££££
- ✓ Connect devices from any device manufacturer
- ✓ Connect to devices using a widest range of wireless connectivity
 - Ethernet, Wifi, Bluetooth, RF869, Zigbee, Lorawan, GSM/4G/5G



What does an Intelligent Monitoring Solution look like?





Join us and help revolutionise social care

www.2ic-care.com



TELEPHONE

Richard Keyse
+44 (0) 771 424 6413

Richard Kennedy
+44 (0) 7534 347015



ADDRESS

20 Mortlake
Mortlake
London
SW14 8JN



E-MAIL

Richard.Keyse@2iC-Care.com

Richard.Kennedy@2iC-Care.com