

everon

Your Digital Partner

**TECS Innovation Showcase 2
Digital Event**

15th March 2023



Who are we?

- Founded in 2004 in Finland.
- Providers of digital solutions since 2007.
- European market leader in digital grouped living solutions.
- Offices in Finland, Sweden and the UK.
- 10% of our revenue is invested back into R&D.
- Service 80,000+ clients per annum.
- We offer a person centred digital 'plug and play' wireless solution.

Vision.

Our Vision is to provide a trusted digital solution that allows the individual to live a safe and independent life.

At the heart of what we do is any vulnerable individual with specific support requirements.

Origon Hub Key Features.

- Smart Wireless Hubs.
- 24 Hour battery backup.
- 2 Way Speech.
- 'Im Okay' function.
- 3 level resilience – GSM, WiFi, Ethernet.
- 2G,3G & 4G capability including VoLTE.
- Connection of upto 64 telecare sensors.
- Reassurance Lighting.
- Digital Clock.
- Constant heartbeat monitoring (2m).



Hybrid.

Digital Dispersed Solution.

Individual homes | Standalone alarm.

Digital Grouped Living Solution.

Multiple dwellings at one location.

Calls Onsite > Support team | Offsite > ARC.

Access control.

Fire panels.

Protocols & Security.

Protocols.

- Digital.

TS50134-9 | SCAIP

BS8521-2 | NOWIP

- Analogue.

BS8521-1 (Bridge).

Security.

TLS v1.2 – Upgrading to v3
VPN.

Data encryption ‘in transit’ and ‘at rest’.

Resilience.

- Dual SIM.
- Both roaming.
- Both non-steered.
- Separate SIM providers.
- 2 Core infrastructure.

- WiFi.
- Ethernet.



Today's Model.

- Reactive.
- Alerts are post incident.
- Individual is already unwell / hurt / distressed.
- No reduction of primary / secondary care incidents.
- Reliance on legacy technology.
- Reluctance towards true interoperability.



Proactive Model.

- Alerts received based on a particular situation / data set.
- Interventions are made prior to individual distress, accident or illness.
- Primary and secondary care incidents are reduced.
- Legacy equipment replaced with efficient and safe digital technology.
- Providers working together to solve commissioners' outcomes.

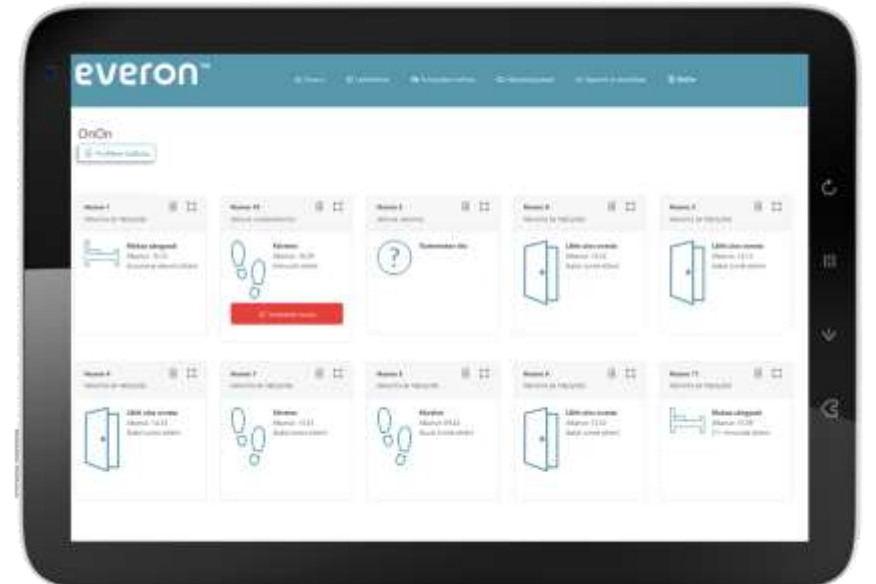
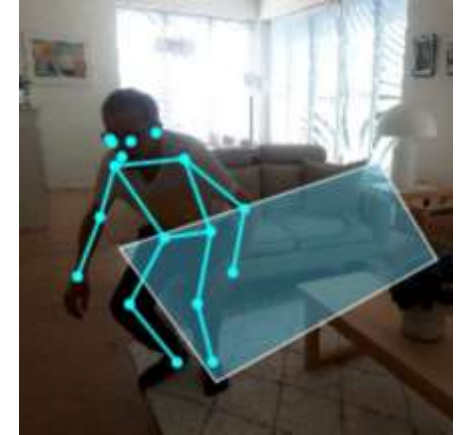
What are commissioners' expectations?

- Fall prevention.
 - Facial recognition / expression, grimaces, pain indication.
 - GAIT – walking patterns for indications of stability.
 - Blood oxygen / sugar levels.
 - Fluid intake.
 - Cardiac health.
 - Air quality / humidity / mold.
-
- Is this possible – Yes!!



OnOn Smart Sensor.

- Digital monitoring 24/7 whilst maintaining privacy.
- Discreet smart sensor located in the individuals set room.
- Lifestyle monitoring.
- Artificial Intelligence & Machine Learning.
- Real time analysis of movement, behavior, raises alerts.
- Fall monitoring, hard and soft.
- Specific parameters can be set – bathroom visits and timings, out of bed movement.



IRIS Air Quality 5 in 1 Sensor.

- Air quality sensor with temperature, humidity PIR & SOS.
- Powered by USB-C or long-life lithium battery.
- Upto 1.5-year battery life.
- Internal antenna for deployment in any indoor environment.
- Full end to end solution with SIM and reporting platform.



Jewish Care Video Case Study.

<https://vimeo.com/805615177/1732fc212b>

This short video gives insight from the scheme manager on.

- How the solution helps the support team.
- How the solution helps residents.
- Why they picked the Everon solution.
- The benefits of the system v previous system.

The video also provides visuals of the Origen hub, pendant, pullcord and Everon mobile and desktop app in a real world environment.

Why Everon ?



Quality · Safety · Innovation



Everon UK Limited

29 Hollingworth Court



Turkey Mill Business Park

Maidstone

ME14 5PP



Mobile: 07931 990352



Email: lee.balfour@everon.net



Website: www.everon.net

**Our flexible, wireless open platform,
providing personalised and sustainable
digital living solutions that enhance life.**