



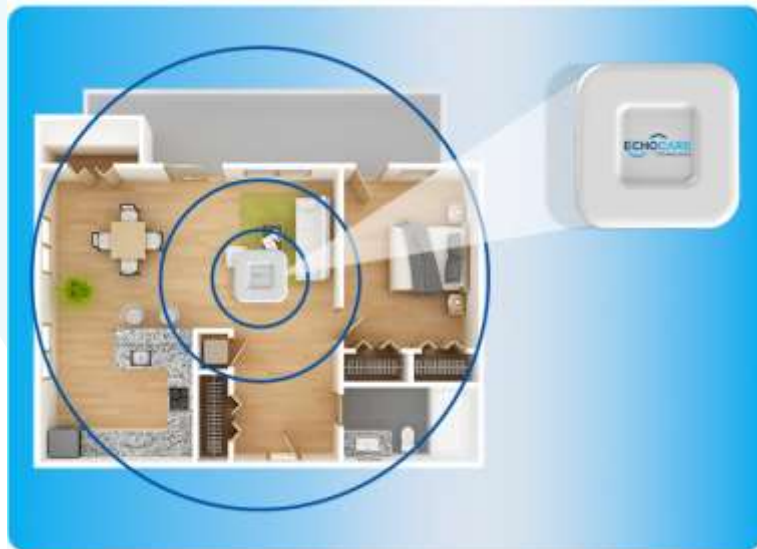
Your Partner  
for Enhanced Senior Safety  
and Well-Being

 AI-Powered Monitoring Solutions

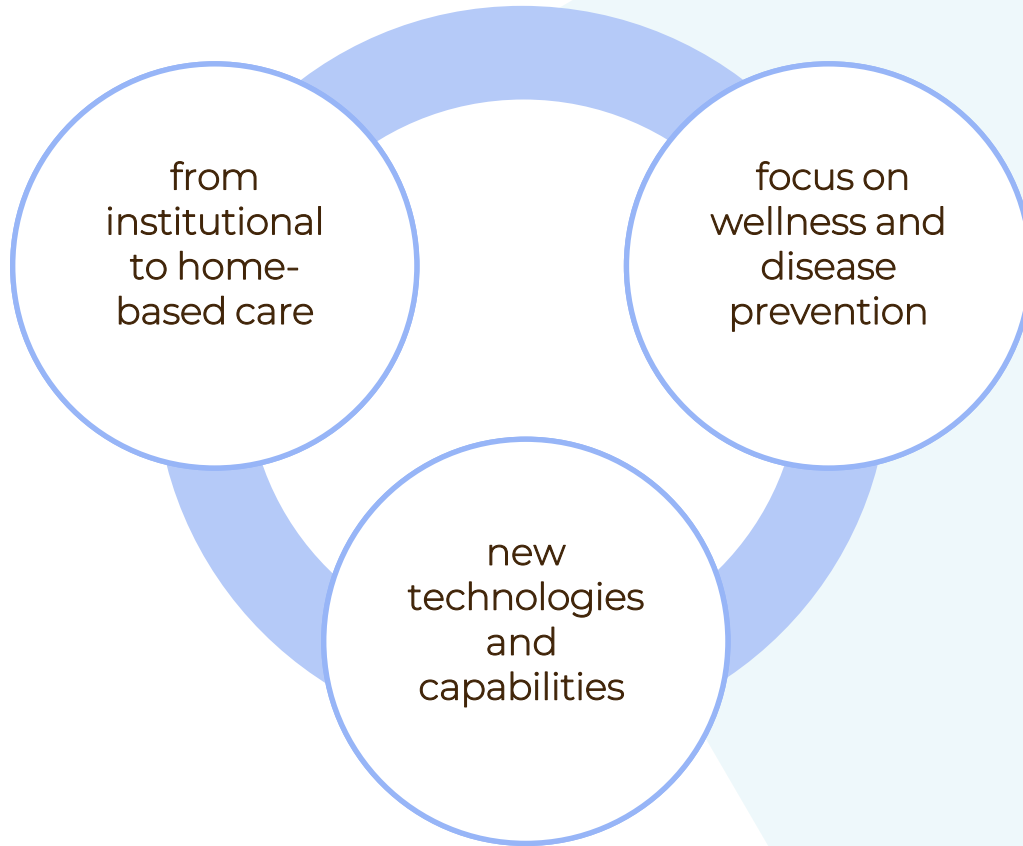


# Tech-Enabled Senior Care

High quality actionable data to make senior living and care providers' staff's job easier and improve client health outcomes



# Transformations in Care



# It's All About The Data

## Emergency Alerts

falls,  
respiratory distress,  
heart rate abnormalities

## Abnormal Alerts

intent to exit bed,  
out of bed,  
wandering,  
prolonged stay in bed  
or bathroom

## Wellness Tracking

fall risk,  
sleep quality,  
social isolation,  
activity levels

# Improving Care and the Bottom Line

improve operations and outcomes

enable proactive care to prevent health problems

respond faster to falls and other emergencies



# Customizable for Various Care Settings



Home and Community Care

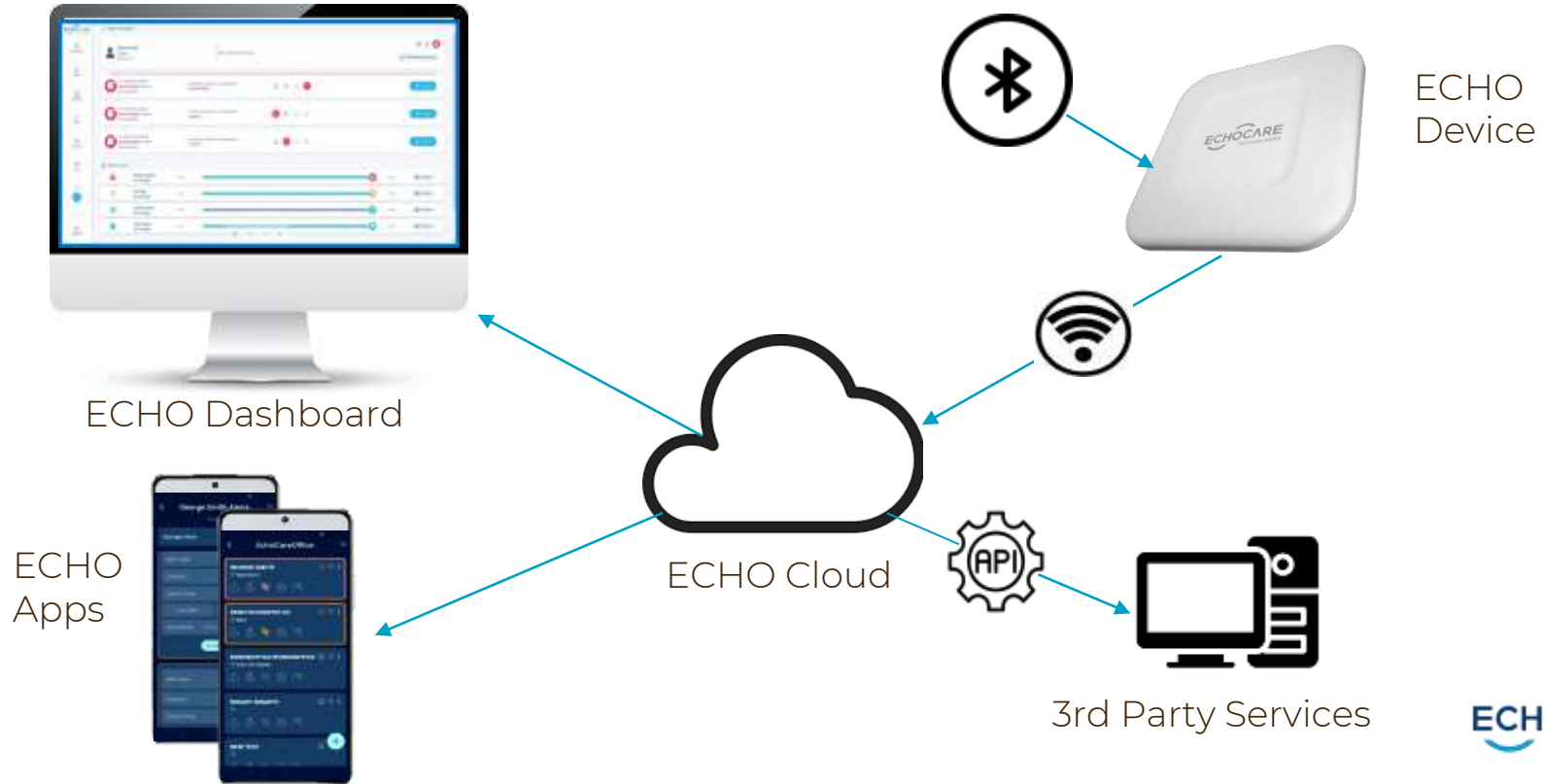


Assisted Living and Memory Care



Skilled Nursing and Post Acute Care

# Comprehensive Care Platform



# Contactless and Always On

Passive and Non-Invasive



Highly Accurate



Superior Coverage



Safe and Secure



Powered by AI



# Simplified Business Model

One Time fee

ECHO Device

+

SaaS fees

Monthly subscription

Preventive Care as a Service



# Key Competitive Advantage

unprecedented  
coverage

comprehensive  
24/7 view, with  
both vitals &  
behavioral data

provision of  
critical last mile  
data

# Management Team



**Klaus Niederlander**  
CEO

25+ management experience in dealing with complex socio-economic challenges.



**Rafi Zack**  
President & COO

30 years of experience in management, R&D & Biz Dev



**Davidi Gilo**  
Executive Chairman

Serial entrepreneur, founded multiple companies including DSP Group, DSPC and CEVA



**Shelley Sternberg, MD**  
Medical Director

Specialist in Internal and Geriatric Medicine, certified in Israel and Canada



**Dov Sugarman**  
VP Biz Dev & Strategy

20+ years of experience in Aging services & Agetech



**Ofer Elazar**  
VP Operations

30+ years of experience in Systems Engineering and Business Management



# data-driven insights

echocare.ai  
info@echocare-tech.com