

nobi

Nobi Smart Lamps

Safe and Happy Living



How it works

Circadian rhythm



Sunrise

Morning

Noon

Afternoon

Sunset

<2000k

3500-4500K

5500-6500K

3500-4500K

<2000K

How it works

Fall Detection

- Optical Sensor
 - 5 metre radius
 - 1 image every second
 - “Rob, did you fall”



nobi detects
a fall



Alarm via central
dashboard of care
home

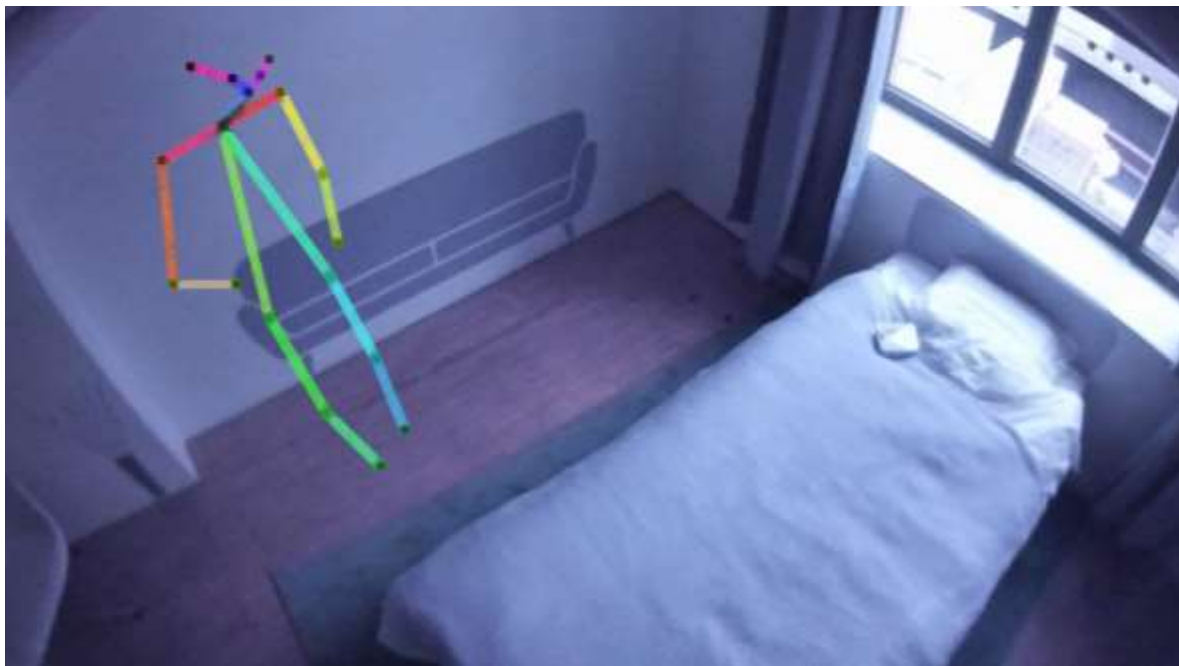


Immediate help
by caregivers



Our loved ones are
taken care of

How it works
Privacy



- GDPR Compliant
 - Full Image
 - No Image
 - Processing on device not cloud

How it works

Fall Prevention



nobi lights an out-of-bed path



nobi shows caregivers when residents could use some help

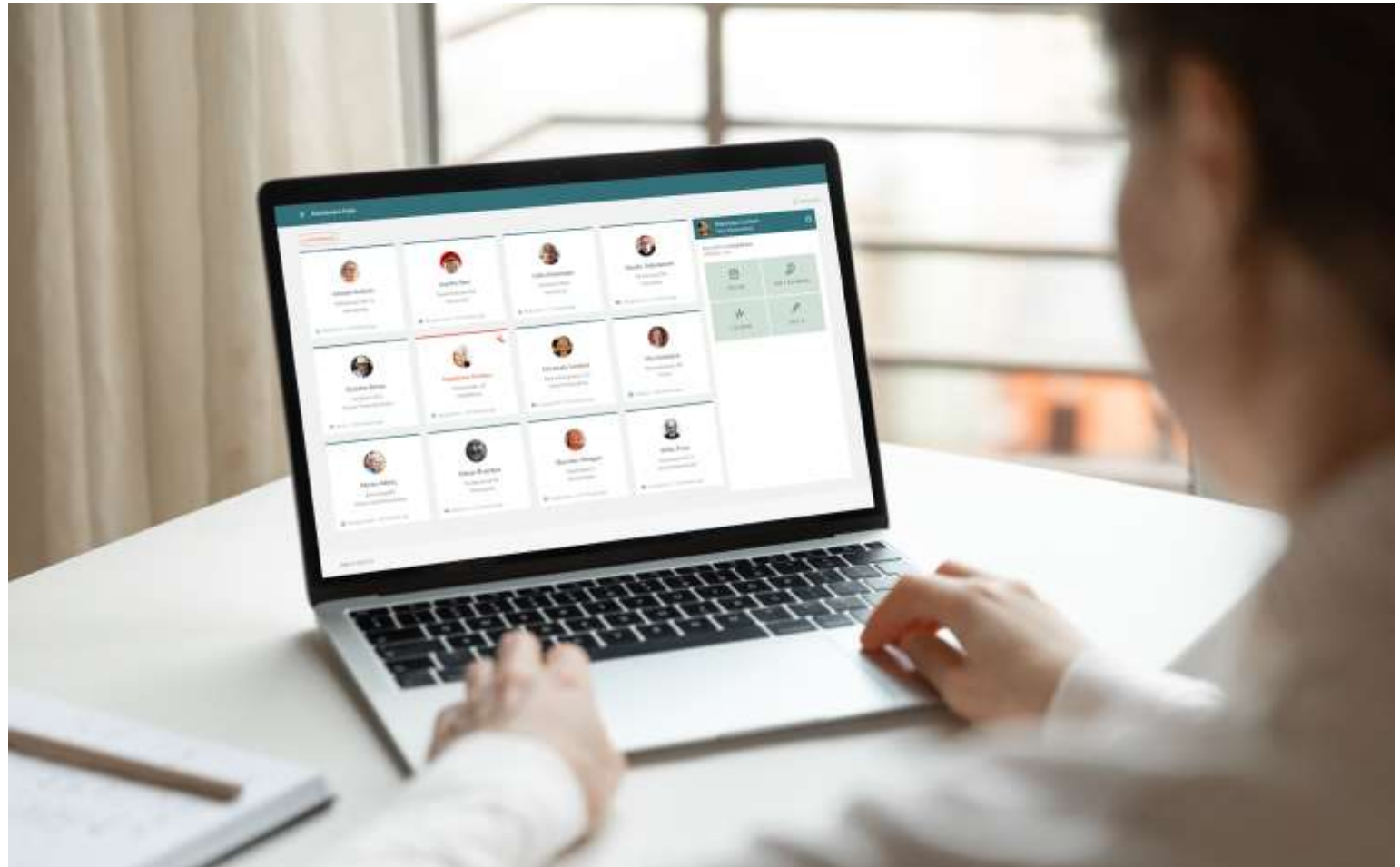


nobi supports caregivers to create a safe and happy environment

How it works

Dashboard

- Overview of entire care facility
 - Current status of each room
 - In room
 - Out of room
 - In bed
 - In bathroom



Results of Using Nobli

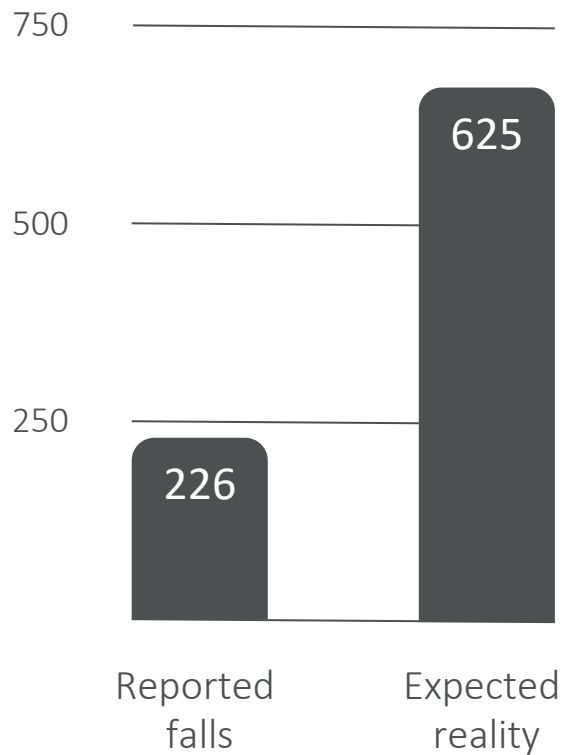
Hartland House



Concrete results

Hartland House : A success story

Insight 1 : Unveiling the invisible – 64% of falls remain hidden



Facts

- NHS Lancashire & South Cumbria ICB funded pilot
- Selected for their precise reporting of falls
- Up and running since May 2023
- 8 of 31 rooms equipped

Concrete results

Hartland House : A success story

Insight 2 : Traditional nurse call systems are insufficient



82% of people who took a fall were unable to use a traditional panic button or call system.

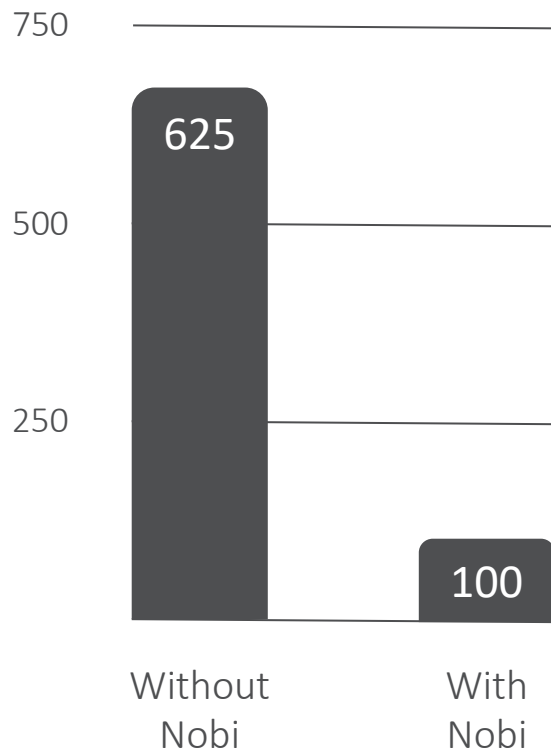
Facts

- NHS Lancashire & South Cumbria ICB funded pilot
- Selected for their precise reporting of falls
- Up and running since May 2023
- 8 of 31 rooms equipped

Concrete results

Hartland House : A success story

Insight 3 : Nobi reduces falls by over 80%



Facts

- NHS Lancashire & South Cumbria ICB funded pilot
- Selected for their precise reporting of falls
- Up and running since May 2023
- 8 of 31 rooms equipped

Concrete results

Hartland House : A success story

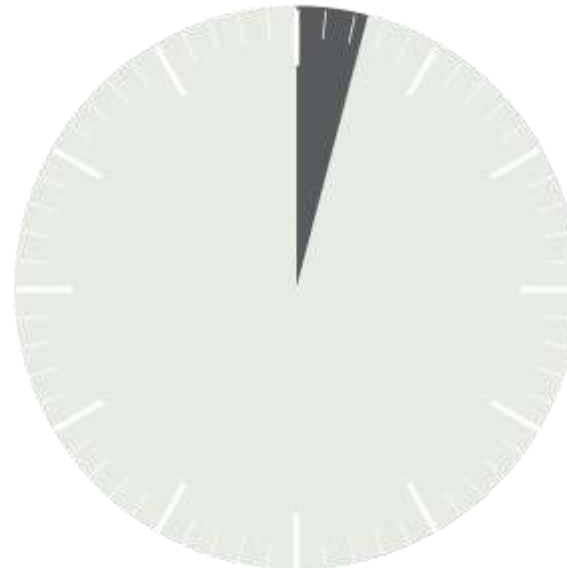
Insight 4 : Nobi enables caregivers to provide help 28 times faster

Without Nobi



Average intervention time
57 minutes

With Nobi



Average intervention time
2 minutes

Facts

- NHS Lancashire & South Cumbria ICB funded pilot
- Selected for their precise reporting of falls
- Up and running since May 2023
- 8 of 31 rooms equipped

nobi

Questions?





Thank you!

www.nobi.life